

# INSTRUCTIONS FOR OPERATION AND ASSEMBLY

## Solenoid interlock AZM201B-I2-SK-T-1P2PW

---

### Table of Contents

- 1 About this document
  - 1.1 Function
  - 1.2 Target group of the operating instructions: authorised qualified personnel
  - 1.3 Explanation of the symbols used
  - 1.4 Appropriate use
  - 1.5 General safety instructions
- 2 Product description
  - 2.1 Ordering code
  - 2.2 Special versions
  - 2.3 Purpose
  - 2.4 Warning about misuse
  - 2.5 Exclusion of liability
  - 2.6 Technical Data
- 3 Mounting
  - 3.1 General mounting instructions
  - 3.2 Dimensions
- 4 Electrical connection
  - 4.1 General information for electrical connection
  - 4.3 Serial diagnostic -SD
  - 4.4 Wiring examples for series-wiring
  - 4.5 Wiring configuration and connector accessories
- 5 Actuator teaching / actuator detection
- 6 Active principle and diagnostic functions
  - 6.1 Magnet control
  - 6.2 Mode of operation of the safety outputs
  - 6.3 Diagnostic-LEDs
  - 6.4 Solenoid interlock with conventional diagnostic output
  - 6.5 Solenoid interlock with serial diagnostic function SD
- 7 Set-up and maintenance
- 8 Disassembly and disposal
  - 8.1 Disassembly
  - 8.2 Disposal
- 9 Appendix – Special versions

## 1 About this document

## 1.1 Function

This document provides all the information you need for the mounting, set-up and commissioning to ensure the safe operation and disassembly of the switchgear. The operating instructions enclosed with the device must always be kept in a legible condition and accessible.

## 1.2 Target group of the operating instructions: authorised qualified personnel

All operations described in the operating instructions manual must be carried out by trained specialist personnel, authorised by the plant operator only.

Please make sure that you have read and understood these operating instructions and that you know all applicable legislations regarding occupational safety and accident prevention prior to installation and putting the component into operation.

The machine builder must carefully select the harmonised standards to be complied with as well as other technical specifications for the selection, mounting and integration of the components.

The information contained in this operating instructions manual is provided without liability and is subject to technical modifications.

## 1.3 Explanation of the symbols used



**Information, hint, note:** This symbol is used for identifying useful additional information.



**Caution:** Failure to comply with this warning notice could lead to failures or malfunctions.

**Warning:** Failure to comply with this warning notice could lead to physical injury and/or damage to the machine.

## 1.4 Appropriate use

The Schmersal range of products is not intended for private consumers.

The products described in these operating instructions are developed to execute safety-related functions as part of an entire plant or machine. It is the responsibility of the manufacturer of a machine or plant to ensure the correct functionality of the entire machine or plant.

The safety switchgear must be exclusively used in accordance with the versions listed below or for the applications authorised by the manufacturer. Detailed information regarding the range of applications can be found in the chapter "Product description".

## 1.5 General safety instructions

The user must observe the safety instructions in this operating instructions manual, the country specific installation standards as well as all prevailing safety regulations and accident prevention rules.



Further technical information can be found in the Schmersal catalogues or in the online catalogue on the Internet:

[products.schmersal.com](http://products.schmersal.com).

## 2 Product description

### 2.1 Ordering code

|  |  |
|--|--|
| Product type description:<br>AZM201(1)-(2)-(3)-T-(4)-(5) |  |
| (1)  |  |
| <b>Z</b>   | Solenoid interlock monitored   |
| <b>B</b>   | Actuator monitored   |
| (2)  |  |
| <b>without</b>   | Standard coding  |
| <b>I1</b>  | Individual coding  |
| <b>I2</b>  | Individual coding, multiple teaching   |
| (3)  |  |
| <b>SK</b>  | Screw terminals  |
| <b>CC</b>  | Cage clamps  |
| <b>ST2</b>   | Connector plug M12, 8-pole   |
| (4)  |  |
| <b>1P2PW</b>   | 1 diagnostic output, p-type and >2 safety outputs, p-type > (combined diagnostic signal: guard system closed and interlock locked) |
| <b>SD2P</b>  | serial diagnostic output and 2 p-type safety outputs   |
| (5)  |  |
| <b>without</b>   | Power to unlock  |
| <b>A</b>   | Power to lock  |

| Actuator          | suitable for                        |
|-------------------|-------------------------------------|
| AZ/AZM201-B1-...  | Sliding safety guards               |
| AZ/AZM201-B30-... | Hinged safety guards                |
| AZ/AZM201-B40-... | Hinged-doors with overlapping folds |

## 2.2 Special versions

For special versions, which are not listed in the ordering code, these specifications apply accordingly, provided that they correspond to the standard version.



Special information or information deviating from the standard on special versions can be found in the concluding chapter "Appendix - Special versions".

## 2.3 Purpose


The non-contact, electronic safety switchgear is designed for application in safety circuits and is used for monitoring the position and locking of movable safety guards.



The safety switchgears are classified according to EN ISO 14119 as type 4 interlocking devices. Designs with individual coding are classified as highly coded.

The different variants can be used as safety switch with interlocking function either as solenoid interlock.



If the risk analysis indicates the use of a **monitored interlock** then a variant with the monitored interlock is to be used, marked with the  symbol in the ordering code.  
The actuator monitoring variant (B) is a safety switch with an interlock function for process protection.

The safety function consists of safely switching off the safety outputs when the safety guard is unlocked or opened and maintaining the safe switched off condition of the safety outputs for as long as the safety guard is open.



Interlocks with power to lock principle may only be used in special cases after a thorough evaluation of the accident risk, since the safety guard can be opened immediately on failure of the power supply or upon activation of the main switch.

### Series-wiring

Series-wiring can be set up. In the case of a series connection, the risk time remains unchanged and the reaction time increases by the sum of the reaction time of the inputs per additional unit specified in the technical data. The quantity of devices is only limited by the cable drops and the external cable fuse protection, according to the technical data. Up to 31 device variants with serial diagnostics can be wired in series.



The user must evaluate and design the safety chain in accordance with the relevant standards and the required safety level. If multiple safety sensors are involved in the same safety function, the PFH values of the individual components must be added.



The entire concept of the control system, in which the safety component is integrated, must be validated to the relevant standards.

## 2.4 Warning about misuse



In case of improper use or manipulation of the safety switchgear, personal hazards or damages to machinery or plant components cannot be excluded. There are no residual risks, provided that the safety instructions as well as the instructions regarding mounting, commissioning, operation and maintenance are observed.

## 2.5 Exclusion of liability

We shall accept no liability for damages and malfunctions resulting from defective mounting or failure to comply with the operating instructions manual. The manufacturer shall accept no liability for damages resulting from the use of unauthorised spare parts or accessories.

For safety reasons, invasive work on the device as well as arbitrary repairs, conversions and modifications to the device are strictly forbidden, the manufacturer shall accept no liability for damages resulting from such invasive work, arbitrary repairs, conversions and/or modifications to the device.

## 2.6 Technical Data

### Approvals - Standards

|              |   |
|--------------|---|
| Certificates | TÜV<br>cULus<br>FCC<br>IC<br>UKCA<br>ANATEL |
|--------------|---|

### General data

|  |  |
|--|--|
| Standards                              | EN ISO 13849-1<br>EN ISO 14119<br>EN IEC 60947-5-3<br>EN IEC 61508 |
| Coding                                 | Individual coding, multiple teaching                               |
| Coding level according to EN ISO 14119 | High   |
| Working principle                      | RFID   |
| Frequency band RFID                    | 125 kHz  |
| Transmitter output RFID, maximum       | -6 dB/m  |
| Housing material                       | Glass-fibre, reinforced thermoplastic                              |

|  |        |
|--|--------|
| Duration of risk, maximum  | 200 ms |
| Reaction time, switching off safety outputs via actuator, maximum      | 100 ms |
| Reaction time, switching off safety outputs via safety inputs, maximum | 1.5 ms |
| Gross weight   | 585 g  |

## General data - Features

|                                     |     |
|-------------------------------------|-----|
| Power to unlock                     | Yes |
| Actuator monitored                  | Yes |
| Manual release                      | Yes |
| Short circuit detection             | Yes |
| Cross-circuit detection             | Yes |
| Series-wiring                       | Yes |
| Safety functions                    | Yes |
| Integral system diagnostics, status | Yes |
| Number of safety contacts           | 2   |

Safety classification

|              |                                |
|--------------|--------------------------------|
| Vorschriften | EN ISO 13849-1<br>EN IEC 61508 |
|--------------|--------------------------------|

## Safety classification - Interlocking function

|  |                          |
|--|--------------------------|
| Performance Level, up to                                   | e                        |
| Category   | 4                        |
| PFH value  | $1.90 \times 10^{-9}$ /h |
| PFD value  | $1.60 \times 10^{-4}$    |
| Safety Integrity Level (SIL), suitable for applications in | 3                        |
| Mission time   | 20 Year(s)               |

## Mechanical data

|  |  |
|--|--|
| Mechanical life, minimum                               | 1,000,000 Operations   |
| Holding force $F_{Zh}$ in accordance with EN ISO 14119 | 2,000 N  |
| Note (clamping force $F_{Zh}$ )                        | 1,000 N when used with the AZ/AZM201-B30 actuator, for indoor use. |
| Holding force $F_{max}$ , maximum                      | 2,600 N  |

|  |   |
|--|---|
| Note (clamping force $F_{max}$ )   | 1.300 N in Verbindung mit einem Betätiger AZ/AZM201-B30 für Innenanbau. |
| Latching force   | 30 N  |
| Actuating speed, maximum   | 0.2 m/s   |
| Type of the fixing screws  | 2x M6   |
| Tightening torque of the fixing screws, maximum                          | 8 Nm  |
| Tightening torque of the fastening screws for the housing cover, minimum | 0.7 Nm  |
| Tightening torque of the fastening screws for the housing cover, maximum | 1 Nm  |
| Note   | Torx T10  |

## Mechanical data - Connection technique

|                                   |  |
|-----------------------------------|--|
| Length of sensor chain, maximum   | 200 m  |
| Note (length of the sensor chain) | Cable length and cross-section change the voltage drop depending on the output current                     |
| Note (series-wiring)              | Unlimited number of devices, observe external line fusing, max. 31 devices in case of serial diagnostic SD |
| Cable entry                       | 1 x M20  |
| Termination                       | Screw terminals  |
| Cable section, minimum            | 0.25 mm <sup>2</sup>   |
| Cable section, maximum            | 1.5 mm <sup>2</sup>  |
| Note                              | All indications including the conductor ferrules.  |
| Wire cross-section, minimum       | 23 AWG   |
| Wire cross-section, maximum       | 15 AWG   |
| Wire cross-section                | 23 ... 15 AWG  |
| Allowed type of cable             | solid single-wire<br>solid multi-wire<br>flexible  |

## Mechanical data - Dimensions

|                  |        |
|------------------|--------|
| Length of sensor | 50 mm  |
| Width of sensor  | 40 mm  |
| Height of sensor | 220 mm |

## Ambient conditions

|                      |              |
|----------------------|--------------|
| Degree of protection | IP66<br>IP67 |
|----------------------|--------------|

|  |                                  |
|--|----------------------------------|
| Ambient temperature  | -25 ... +60 °C                   |
| Storage and transport temperature                          | -25 ... +85 °C                   |
| Relative humidity, maximum                                 | 93 %                             |
| Note (Relative humidity)                                   | non-condensing<br>non-icing      |
| Resistance to vibrations                                   | 10 ... 150 Hz, amplitude 0.35 mm |
| Resistance to shock  | 30 g / 11 ms                     |
| Protection class   | III                              |
| Permissible installation altitude above sea level, maximum | 2,000 m                          |

## Ambient conditions - Insulation values

|   |        |
|---|--------|
| Rated insulation voltage $U_i$            | 32 VDC |
| Rated impulse withstand voltage $U_{imp}$ | 0.8 kV |
| Overvoltage category                      | III    |
| Degree of pollution                       | 3      |

## Electrical data

|   |   |
|---|---|
| Operating voltage                           | 24 VDC -15 % / +10 % (stabilised PELV power supply) |
| No-load supply current $I_0$ , typical      | 50 mA   |
| Current consumption with magnet ON, average | 200 mA  |
| Current consumption with magnet ON, peak    | 700 mA / 100 ms                                     |
| Rated operating voltage                     | 24 VDC  |
| Operating current                           | 1,200 mA  |
| Required rated short-circuit current        | 100 A   |
| External wire and device fuse rating        | 4A gG   |
| Time to readiness, maximum                  | 4,000 ms  |
| Switching frequency, maximum                | 1 Hz  |

## Electrical data - Magnet control

|                              |  |
|------------------------------|--|
| Designation, Magnet control  | IN   |
| Switching thresholds         | -3 V ... 5 V (Low)<br>15 V ... 30 V (High) |
| Current consumption at 24 V  | 10 mA                                      |
| Magnet switch-on time        | 100 %                                      |
| Test pulse duration, maximum | 5 ms                                       |



|                                   |                |
|-----------------------------------|----------------|
| Test pulse interval, minimum      | 40 ms          |
| Classification ZVEI CB24I, Sink   | C0             |
| Classification ZVEI CB24I, Source | C1<br>C2<br>C3 |

## Electrical data - Safety digital inputs

|                                   |  |
|-----------------------------------|--|
| Designation, Safety inputs        | X1 and X2                                  |
| Switching thresholds              | -3 V ... 5 V (Low)<br>15 V ... 30 V (High) |
| Current consumption at 24 V       | 5 mA                                       |
| Test pulse duration, maximum      | 1 ms                                       |
| Test pulse interval, minimum      | 100 ms                                     |
| Classification ZVEI CB24I, Sink   | C1   |
| Classification ZVEI CB24I, Source | C1<br>C2<br>C3                             |

## Electrical data - Safety digital outputs

|  |                             |
|--|-----------------------------|
| Designation, Safety outputs              | Y1 and Y2                   |
| Rated operating current (safety outputs) | 250 mA                      |
| Design of control elements               | short-circuit proof, p-type |
| Voltage drop $U_d$ , maximum             | 2 V                         |
| Leakage current $I_p$ , maximum          | 0.5 mA                      |
| Voltage, Utilisation category DC-13      | 24 VDC                      |
| Current, Utilisation category DC-13      | 0.25 A                      |
| Test pulse interval, typical             | 1000 ms                     |
| Test pulse duration, maximum             | 0.5 ms                      |
| Classification ZVEI CB24I, Source        | C2                          |
| Classification ZVEI CB24I, Sink          | C1<br>C2                    |

## Electrical data - Diagnostic outputs

|                                 |                             |
|---------------------------------|-----------------------------|
| Designation, Diagnostic outputs | OUT                         |
| Operating current               | 50 mA                       |
| Design of control elements      | short-circuit proof, p-type |
| Voltage drop $U_d$ , maximum    | 4 V                         |

Voltage, Utilisation category DC-13 24 VDC

Current, Utilisation category DC-13 0.05 A

## Status indication

Note (LED switching conditions display)

Operating condition: LED green  
Error / functional defect: LED red  
Supply voltage UB: LED green

## Note about the safety classification



The safety classification of the guard locking function only applies for standard devices with monitored solenoid interlock AZM201Z-...-1P2PW-... (see Ordering code). A safety classification of the guard locking function for devices with serial diagnostics "SD2P" is not allowed due to the non-safe locking/unlocking signal from the SD Gateway



If for a certain application the power to unlock version of a solenoid interlock cannot be used, for this exception an interlock with power to lock can be used if additional safety measure need to be realised that have an equivalent safety level.



The safety analysis of the guard locking function refers to the component solenoid interlock AZM as part of the complete system.

On the customer side further measures such as safe actuation and safe cable installation to prevent faults are to be implemented.

In the event of a fault resulting in the unlocking of the guard locking, this is detected by the solenoid interlock and the safety gates Y1/Y2 switch off. When such a fault occurs the protection equipment may open immediately, just once, before the safe condition of the machine is reached. The system reaction of category 2 allows that a fault can occur between tests causing the loss of the safety function which is detected by the test.



The actuation of the interlock must be compared externally with the OSSD release. If a shut-down now occurs due to an unintentional unlocking this is detected by an external diagnostic.

## UL notice

Use isolated power supply only. For use in NFPA 79 Applications only. Adapters providing field wiring means are available from the manufacturer. Refer to manufacturers information.

## FCC/IC - Note

This device complies with Part 15 of the FCC Rules and contains licence-exempt transmitter/receivers that are compliant with ISED (Innovation, Science and Economic Development) Canada licence-exempt RSS standard(s).

Operation is subject to the following two conditions:

- (1) This device may not cause harmful interference signals, and
- (2) This device must be able to tolerate interference signals. These also include interference signals that could cause the device to function improperly.

This device complies with the nerve stimulation limits (ISED SPR-002) when operated at a minimum distance of 100 mm. Changes or modifications not expressly approved by K.A. Schmersal GmbH & Co. KG could void the user's authority to operate the equipment.

The licence-free transmitter/receiver contained in this device satisfies the requirements of the "Radio Standards Specification" of the Innovation, Science and Economic Development Canada (ISED) authority that apply to licence-free radio equipment. Operation is permissible under the following two conditions:

(1) The device must not create disturbances.

(2) The device must tolerate received radio frequency interference, even if this could impair its functionality.

This device complies with the nerve stimulation limits (ISED CNR-102) when operated at a minimum distance of 100 mm.

In the event of changes or modifications that have not been expressly approved by K.A. Schmersal GmbH & Co. KG, the user's authorisation to use the device may become ineffective.



20941-22-14519

Este equipamento não tem direito à proteção contra interferência prejudicial e não pode causar interferência em sistemas devidamente autorizados.

Para maiores informações consultar: [www.gov.br/anatel](http://www.gov.br/anatel)

## 3 Mounting

### 3.1 General mounting instructions

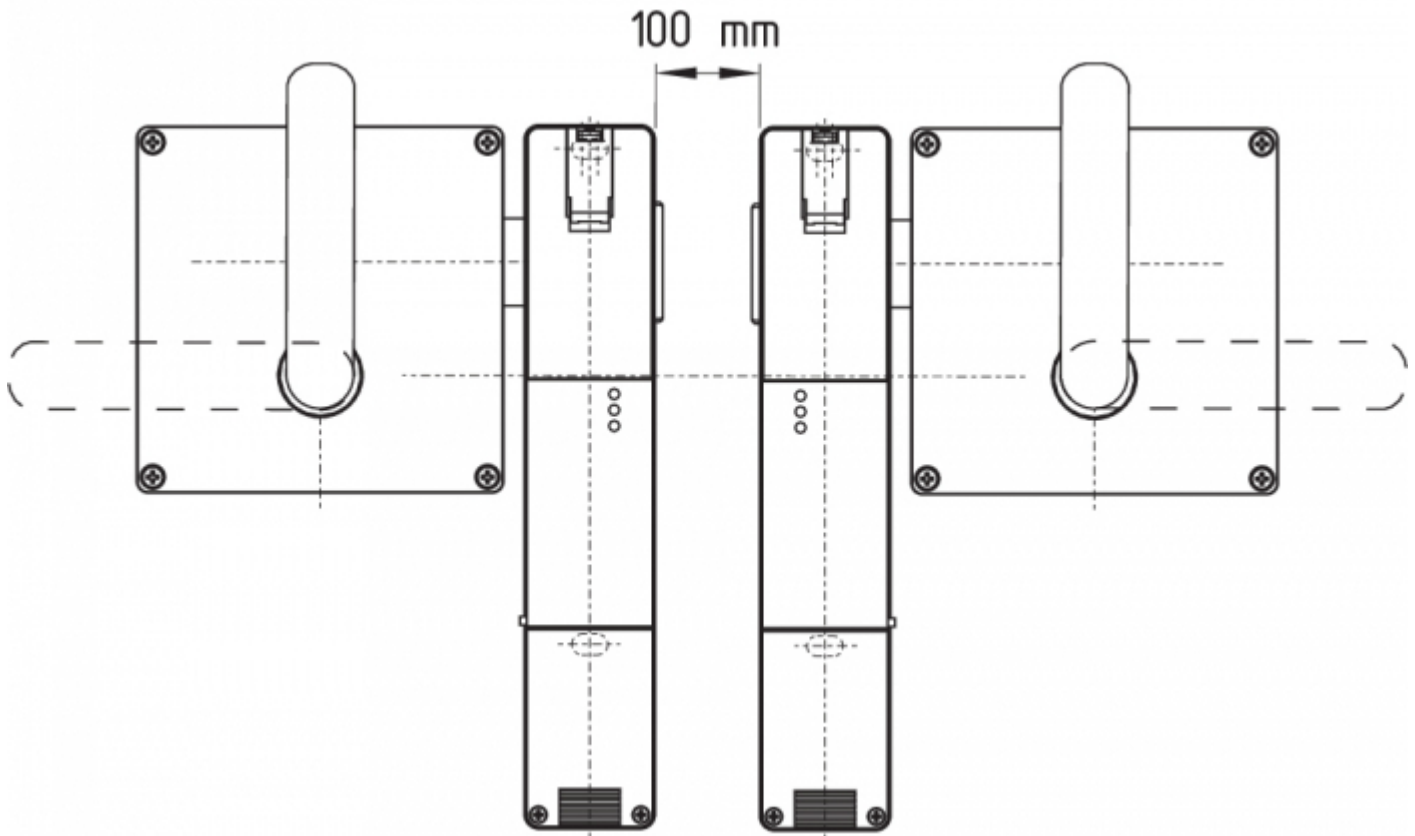


Please observe the relevant requirements of the standards ISO 12100, ISO 14119 and ISO 14120.

For fitting the safety switch and the actuator, two mounting holes for M6 screws with washers (washers included in delivery) are provided. The safety switch must not be used as end stop. Any position is possible. The mounting position however must be chosen so that the ingress of dirt and soiling in the used opening is avoided. The unused actuator opening must be sealed by means of the dust-proof flap (included in delivery).

#### **Minimum distance between two safety switchgear**

as well as to other systems with same frequency (125 kHz): 100 mm.



### Mounting of the actuators

Refer to the mounting instructions manual for the corresponding actuator.



The actuator must be permanently fitted to the safety guards and protected against displacement by suitable measures (tamperproof screws, gluing, drilling of the screw heads).

### Manual release

For the machine set-up, the solenoid interlock can be unlocked in a de-energised condition. After opening of the plastic flap "A" (refer to image "Dimensions"), the triangular key must be turned clockwise to bring the blocking bolt in unlocking condition. The normal locking function is only restored after the triangular key has been returned to its original position.



Caution: do not turn beyond the latching point, maximum tightening torque: 1.3 Nm.

After being put into operation, the manual release must be secured by closing the plastic flap "A" and affixing the seal, which is included in delivery.

|                                      |  |
|--------------------------------------|--|
| <b>Component ready for operation</b> | <b>Component not ready for operation</b> |
|--------------------------------------|--|



## 3.2 Dimensions

All measurements in mm.



### Legend

A: Manual release

B: Active RFID area



Metal parts and magnetic fields in the lateral RFID area of the safety switchgear and the actuator can influence the switching distance or lead to malfunctions.

**Retrofit kit for Manual release/Emergency exit**

The retrofit kit is used for subsequent functional expansion of the solenoid interlock.

|                   | Designation | Ordering code |
|-------------------|-------------|---------------|
| Emergency release | RF-AZM200-N | 103003543     |
| Emergency Exit    | RF-AZM200-T | 103004966     |

## 4 Electrical connection

### 4.1 General information for electrical connection



The electrical connection may only be carried out by authorised personnel in a de-energised condition.

The power supply must have protection against permanent overvoltage. Supply units according to EN 60204-1 is recommended.

The required electrical cable fuse protection must be integrated in the installation.

The safety outputs can be integrated into the safety circuit of the control system.

#### Requirements for the connected safety-monitoring module:

Dual-channel safety input, suitable for 2 p-type semi-conductor outputs



#### Safety controller configuration

If the safety switchgear is connected to electronic safety-monitoring modules, we recommend that you set a discrepancy time of at least 100 ms. The safety inputs of the safety-monitoring module must be able blanking a test impulse of approx. 1 ms. The safety-monitoring module does not need to have a cross-wire short monitoring function, if necessary, the cross-wire short monitoring function must be disabled.



Information for the selection of suitable safety-monitoring modules can be found in the Schmersal catalogues or in the online catalogue on the Internet: [products.schmersal.com](http://products.schmersal.com)

#### Cable

The cable entry is realised by a metric M20 gland. This gland must be dimensioned by the user so that it is suitable for the cable used. A cable gland with strain relief and suitable IP degree of protection must be used.

#### Settle length x of the conductor:

- on screw terminals (SK): 8 mm
- on cage clamps (CC) of type s, r or f: 7.5 mm



### 4.3 Serial diagnostic -SD



The fitted 24V, X1, X2 bridge is included in the delivery of ...-1P2PW and ...-SD2P.



On wiring SD devices, please pay attention to the voltage drop on the cables and the current carrying capacity of the individual components.



#### Accessories for the series-wiring

For convenient wiring and series-wiring of SD components, the SD junction boxes PFB-SD-4M12-SD (variant for the field) and PDM-SD-4CC-SD (variant for control cabinet on carrier rail) are available along with additional comprehensive accessories. Detailed information is available on the Internet, [products.schmersal.com](http://products.schmersal.com).

### 4.4 Wiring examples for series-wiring

Series-wiring can be set up. In the case of a series connection, the risk time remains unchanged and the reaction time increases by the sum of the reaction time of the inputs per additional unit specified in the technical data. The quantity of devices is only limited by the cable drops and the external cable fuse protection, according to the technical data. Series-wiring of up to 31 AZM201 ... SD components with serial diagnostics is possible.

The application examples shown are suggestions. They however do not release the user from carefully checking whether the switchgear and its set-up are suitable for the individual application. The application examples shown are suggestions.

#### Wiring example 1: Series wiring AZM201 with conventional diagnostic output.

In the series wiring, the 24V-X1-X2 bridge must be removed from all components up to the last component. The voltage is supplied at both safety inputs of the terminal safety component of the chain (considered from the safety-monitoring module). The safety outputs of the first safety component are wired to the safety-monitoring module.



Y1 and Y2 = Safety outputs → Safety monitoring module

**Wiring example 2: Series-wiring of the AZM201 with serial diagnostic function (max. 31 components in series)**

In devices with the serial diagnostics function (ordering suffix -SD), the serial diagnostics connections are wired in series and connected to a SD-Gateway for evaluation purposes. The safety outputs of the first safety component are wired to the safety-monitoring module. The serial Diagnostic Gateway is connected to the serial diagnostic input of the first safety component.





Y1 and Y2 = Safety outputs → Safety monitoring module  
 SD-IN → Gateway → Field bus

## 4.5 Wiring configuration and connector accessories

| Function safety switchgear |                                     | Pin configuration of the connector ST2, M12, 8-pole | Configuration of the removable terminal blocks | Colour codes of the Schmersal connector plugs to DIN 47100 | Poss. colour code of other commercially available connector plugs according to EN 60947-5-2 |    |    |
|----------------------------|-------------------------------------|---|--|--|---|----|----|
|                            | with conventional diagnostic output | with serial diagnostic function                     |  |  |   |    |    |
| 24V                        | Ue                                  |   |  | 1  | 1   | WH | BN |
| X1                         | Safety input 1                      |   |  | 2  | 2   | BN | WH |
| GND                        | GND                                 |   |  | 3  | 5   | GN | BU |
| Y1                         | Safety output 1                     |   |  | 4  | 7   | YE | BK |
| OUT                        | Diagnostic output                   | SD output   |  | 5  | 9   | GY | GY |
| X2                         | Safety input 2                      |   |  | 6  | 3   | PK | PK |
| Y2                         | Safety output 2                     |   |  | 7  | 8   | BU | VT |
| IN                         | Magnet control                      | SD input  |  | 8  | 4   | RD | OR |
|                            | without function                    |   | -  | 6  |   |    |    |

| View Terminal block for ordering suffix -SK or -CC   | View Version with removable terminal blocks  |     |    |     |    |                  |  |  |  |   |     |   |    |    |     |   |     |     |    |    |    |                 |  |  |  |  |     |  |    |    |     |
|--|--|-----|----|-----|----|------------------|--|--|--|---|-----|---|----|----|-----|---|-----|-----|----|----|----|-----------------|--|--|--|--|-----|--|----|----|-----|
| <table border="1"> <tr><td>24V</td><td>24V</td><td>X1</td><td>X2</td><td>IN</td></tr> <tr><td colspan="5">AZM201.-.-1P2PW-</td></tr> <tr><td>GND</td><td></td><td>Y1</td><td>Y2</td><td>OUT</td></tr> </table> | 24V  | 24V | X1 | X2  | IN | AZM201.-.-1P2PW- |  |  |  |   | GND |   | Y1 | Y2 | OUT | <table border="1"> <tr><td>24V</td><td>24V</td><td>X1</td><td>X2</td><td>IN</td></tr> <tr><td colspan="5">AZM201.-.-SD2P-</td></tr> <tr><td>GND</td><td></td><td>Y1</td><td>Y2</td><td>OUT</td></tr> </table> | 24V | 24V | X1 | X2 | IN | AZM201.-.-SD2P- |  |  |  |  | GND |  | Y1 | Y2 | OUT |
| 24V  | 24V  | X1  | X2 | IN  |    |                  |  |  |  |   |     |   |    |    |     |   |     |     |    |    |    |                 |  |  |  |  |     |  |    |    |     |
| AZM201.-.-1P2PW-   |  |     |    |     |    |                  |  |  |  |   |     |   |    |    |     |   |     |     |    |    |    |                 |  |  |  |  |     |  |    |    |     |
| GND  |  | Y1  | Y2 | OUT |    |                  |  |  |  |   |     |   |    |    |     |   |     |     |    |    |    |                 |  |  |  |  |     |  |    |    |     |
| 24V  | 24V  | X1  | X2 | IN  |    |                  |  |  |  |   |     |   |    |    |     |   |     |     |    |    |    |                 |  |  |  |  |     |  |    |    |     |
| AZM201.-.-SD2P-  |  |     |    |     |    |                  |  |  |  |   |     |   |    |    |     |   |     |     |    |    |    |                 |  |  |  |  |     |  |    |    |     |
| GND  |  | Y1  | Y2 | OUT |    |                  |  |  |  |   |     |   |    |    |     |   |     |     |    |    |    |                 |  |  |  |  |     |  |    |    |     |
|  | <table border="1"> <tr><td>1</td><td>2</td><td>3</td><td>4</td></tr> <tr><td colspan="4">AZM201.-.-1P2PW-</td></tr> <tr><td>5</td><td>6</td><td>7</td><td>8</td><td>9</td></tr> </table> | 1   | 2  | 3   | 4  | AZM201.-.-1P2PW- |  |  |  | 5 | 6   | 7 | 8  | 9  |     |   |     |     |    |    |    |                 |  |  |  |  |     |  |    |    |     |
| 1  | 2  | 3   | 4  |     |    |                  |  |  |  |   |     |   |    |    |     |   |     |     |    |    |    |                 |  |  |  |  |     |  |    |    |     |
| AZM201.-.-1P2PW-   |  |     |    |     |    |                  |  |  |  |   |     |   |    |    |     |   |     |     |    |    |    |                 |  |  |  |  |     |  |    |    |     |
| 5  | 6  | 7   | 8  | 9   |    |                  |  |  |  |   |     |   |    |    |     |   |     |     |    |    |    |                 |  |  |  |  |     |  |    |    |     |

| Connecting cables with coupling (female) IP67 / IP69, M12, 8-pole - 8 x 0.25 mm <sup>2</sup> to DIN 47100 |               |
|---|---------------|
| Cable length  | Ordering code |
| 2,5 m   | 103011415     |
| 5,0 m   | 103007358     |
| 10,0 m  | 103007359     |
| 15,0 m  | 103011414     |

## 5 Actuator teaching / actuator detection

Solenoid interlocks with standard coding are ready to use upon delivery.

Individually coded solenoid interlocks and actuators will require the following "teach-in" procedure:

1. Switch the solenoid interlock's voltage supply off and back on.
2. Introduce the actuator in the detection range. The teach-in procedure is signalled at the solenoid interlock, green LED off, red LED on, yellow LED flashes (1 Hz).
3. After 10 seconds, brief yellow cyclic flashes (3 Hz) request the switch-off of the operating voltage of the solenoid interlock. (If the voltage is not switched off within 5 minutes, the solenoid interlock cancels the "teach-in" procedure and signals a false actuator by 5 red flashes.)
4. Once the operating voltage is switched back on, the actuator must be detected once more in order to activate the actuator code that has been taught in. In this way, the activated code is definitively saved!

For ordering suffix -I1, the executed allocation of safety switchgear and actuator is irreversible.

For ordering suffix -I2, the "teach-in" procedure for a new actuator can be repeated an unlimited number of times.

When a new actuator is taught, the code, which was applicable until that moment, becomes invalid. Subsequent to that, an enabling inhibit will be active for ten minutes, thus providing for an increased protection against tampering.

The green LED will flash until the expiration of the time of the enabling inhibit and the detection of the new actuator. In case of power failure during the lapse of time, the 10-minutes tampering protection time will restart.

## 6 Active principle and diagnostic functions

### 6.1 Magnet control

In the power to unlock version of the AZM201, the solenoid interlock is unlocked when the IN signal (= 24V) is set. In the power to lock version of the AZM201, the solenoid interlock is locked when the IN signal (= 24 V) is set.

### 6.2 Mode of operation of the safety outputs

In the standard AZM201 variant, the unlocking of the solenoid interlock causes the safety outputs to be disabled. The unlocked safety guard can be relocked as long as the actuator is inserted in the AZM201 solenoid interlock; in that case, the safety outputs are re-enabled.

**It is not necessary to open the safety guard.**

In the B-variant AZM201B, the opening of the safety guard causes the safety outputs to be disabled.

### 6.3 Diagnostic-LEDs

The solenoid interlock signals the operational state as well as errors through three coloured LED's installed on the front side of the device.

|                        |  |
|------------------------|--|
| <b>green</b> (Power)   | Supply voltage on  |
| <b>yellow</b> (Status) | Operating condition  |
| <b>red</b> (Fault)     | Error (see table 2: Error messages / flash codes red diagnostic LED) |

### 6.4 Solenoid interlock with conventional diagnostic output

The short-circuit proof diagnostic output OUT can be used for central visualisation or control tasks, e.g. in a PLC.

### The diagnostic output is not a safety-related output.

#### Error

Errors which no longer guarantee the function of the safety switchgear (internal errors) cause the safety outputs to be disabled within the duration of risk. After fault rectification, the error message is reset by opening and re-closing the corresponding safety guard.



Automatic, electronic locking takes place if more than one fault is detected at the safety outputs or a cross circuit is detected between Y1 and Y2. This means that normal fault acknowledgement is no longer possible. To reset this type of interlock, the solenoid interlock must be isolated from the supply voltage after elimination of the error causes.

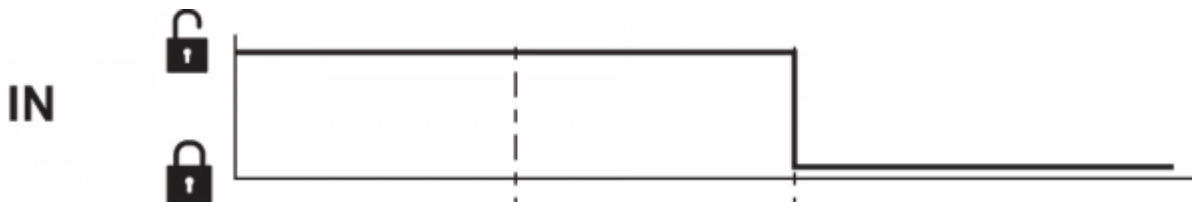
#### Fault warning

A fault that does not immediately endanger the safety function of the safety switchgear (e.g. too high ambient temperature, safety output at external potential, cross-circuit) leads to delayed shutdown (see Table 2). This signal combination, diagnostic output disabled and safety channels still enabled, can be used to stop the production process in a controlled manner. An error warning is deleted when the cause of error is eliminated. If the fault warning remains on for 30 minutes, the safety outputs are also switched off (red LED flashes, see Table 2).

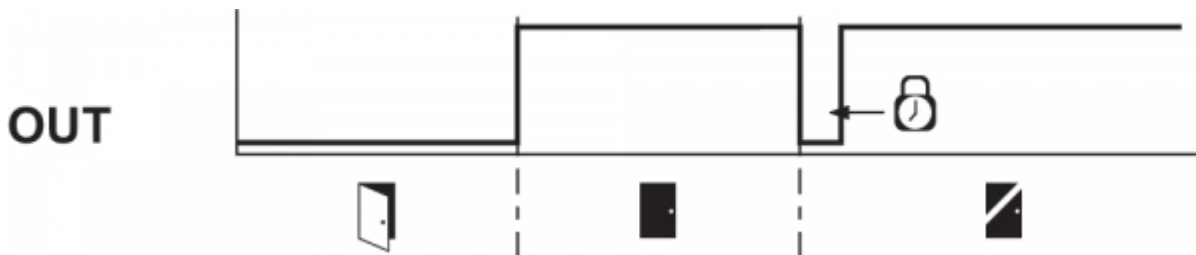
#### Behaviour of the diagnostic output (version ...-1P2PW)

(Example: power to unlock version)

#### Input signal magnet control



#### Normal sequence, door was locked



#### Door could not be locked or fault

OUT



**Key**



Lock



Unlock



Door open



Safety guard closed



Locking time: 150 ... 250 ms, typically 200 ms



Safety guard not locked or fault



Safety guard locked

**Evaluation of the diagnostic output (Version ...-1P2PW)**



**Table 1: Diagnostic information of the safety switchgear**

| System condition  | Magnet control IN |               | LED     |  |         | Safety outputs Y1, Y2 |                    | Diagnostic output OUT |
|---|-------------------|---------------|---------|--|---------|-----------------------|--------------------|-----------------------|
|   | Power to unlock   | Power to lock | green   | red                                      | yellow  | AZM201Z               | AZM201B            | -1P2PW                |
| Door open   | 24 V (0 V)        | 0 V (24 V)    | On      | Off                                      | Off     | 0 V                   | 0 V                | 0 V                   |
| Door closed, <b>actuator not inserted</b>                               | 24 V              | 0 V           | On      | Off                                      | Off     | 0 V                   | 0 V                | 0 V                   |
| Door closed, actuator inserted, <b>not locked</b>                       | 24 V              | 0 V           | On      | Off                                      | Flashes | 0 V                   | 24 V               | 24 V                  |
| Door closed, actuator inserted, <b>interlocking blocked</b>             | 0 V               | 24 V          | On      | Off                                      | Flashes | 0 V                   | 24 V               | 0 V                   |
| Door closed, actuator inserted and locked                               | 0 V               | 24 V          | On      | Off                                      | On      | 24 V                  | 24 V               | 24 V                  |
| <b>Error warning<sup>1)</sup></b><br>solenoid interlock locked          | 0 V               | 24 V          | On      | Flashes <sup>2)</sup>                    | On      | 24 V <sup>1)</sup>    | 24 V <sup>1)</sup> | 0 V                   |
| <b>Error</b>  | 0 V (24 V)        | 24 V (0 V)    | On      | Flashes <sup>2)</sup> /Off <sup>1)</sup> | Off     | 0 V                   | 0 V                | 0 V                   |
| <b>Additionally for variant I1/I2:</b>                                  |                   |               |         |  |         |                       |                    |                       |
| Teach-in procedure actuator started                                     |                   |               | Off     | On                                       | Flashes | 0 V                   | 0 V                | 0 V                   |
| Only I2: teach-in procedure actuator (release block)                    |                   |               | Flashes | Off                                      | Off     | 0 V                   | 0 V                | 0 V                   |
| <p>1) after 30 min. disabling due to fault</p> <p>2) see flash code</p> |                   |               |         |  |         |                       |                    |                       |

| Table 2: Error messages / flash codes red diagnostic LED |  |                             |   |
|--|--|-----------------------------|---|
| Flash codes  | Designation  | Autonomous switch-off after | Error cause   |
| 1 flash pulse  | Error (warning) at output Y1                       | 30 min                      | Fault in output test or voltage at output Y1, although the output is disabled.                |
| 2 flash pulses   | Error (warning) at output Y2                       | 30 min                      | Fault in output test or voltage at output Y2, although the output is disabled.                |
| 3 flash pulses   | Error (warning) cross-wire short                   | 30 min                      | Cross-wire short between the output cables or fault at both outputs                           |
| 4 flash pulses   | Error (warning) temperature too high               | 30 min                      | The temperature measurement reveals an internal temperature that is too high                  |
| 5 flash pulses   | Actuator fault                                     | 0 min                       | Incorrect or defective actuator   |
| 6 flash pulses   | Error actuator combination                         | 0 min                       | An invalid combination of actuators was detected (blocking bolt detection or tamper attempt). |
| Continuous red signal                                    | Internal fault / overvoltage or undervoltage fault | 0 min                       | Device defective / supply voltage not within specifications                                   |

## 6.5 Solenoid interlock with serial diagnostic function SD

Solenoid interlocks with serial diagnostic cable have a serial input and output cable instead of the conventional diagnostic output. If solenoid interlocks are wired in series, the diagnostic data are transmitted through the series-wiring of the inputs and outputs.

Max. 31 solenoid interlocks can be wired in series. For the evaluation of the serial diagnostics line either the PROFIBUS-Gateway SD-I-DP-V0-2 or the Universal-Gateway SD-I-U-... are used. This serial diagnostic interface is integrated as slave in an existing field bus system. In this way, the diagnostic signals can be evaluated by means of a PLC.

The necessary software for the integration of the SD-Gateway is available for download at [products.schmersal.com](http://products.schmersal.com).

The response data and the diagnostic data are automatically and permanently written in an input byte of the PLC for each solenoid interlock in the series-wired chain. The request data for each solenoid interlock is transmitted to the component through an output byte of the PLC. In case of a communication error between the SD-gateway and the solenoid interlock, the switching condition of the solenoid interlock is maintained.

### Error

Errors which no longer guarantee the function of the safety switchgear (internal errors) cause the safety outputs to be disabled within the duration of risk. The fault is reset, when the cause is eliminated and bit 7 of the request byte changes from 1 to 0 or the safety guard is opened. Faults at the safety outputs are only deleted upon the next release, as the fault rectification cannot be detected sooner.





Automatic, electronic locking takes place if more than one fault is detected at the safety outputs or a cross circuit is detected between Y1 and Y2. This means that normal fault acknowledgement is no longer possible. To reset this type of interlock, the solenoid interlock must be isolated from the supply voltage after elimination of the error causes.

### Error warning

A fault that does not immediately endanger the safety function of the safety switchgear (e.g. too high ambient temperature, safety output at external potential, cross-circuit) leads to delayed shutdown. This signal combination, diagnostic output disabled and safety channels still enabled, can be used to stop the production process in a controlled manner.

An error warning is deleted when the cause of error is eliminated.

If the fault warning remains on for 30 minutes, the safety outputs are also switched off (red LED flashes).

### Diagnostic error (warning)

If an error (warning) is signalled in the response byte, detailed fault information can be read out.

**Table 3: I/O data and diagnostic data**  
(The described condition is reached, when Bit = 1)

| Bit n° | Request byte  | Response byte                      | Diagnostic error warning  | Diagnostic error warning        |
|--------|---|------------------------------------|---|---------------------------------|
| Bit 0: | Magnet in, irrespective of power to lock or power to unlock principle | Safety output activated            | Error output Y1   | Error output Y1                 |
| Bit 1: | ---   | Actuator detected                  | Error output Y2   | Error output Y2                 |
| Bit 2: | ---   | Actuator detected and locked       | Cross-wire short  | Cross-wire short                |
| Bit 3: | ---   | ---                                | Temperature too high  | Temperature too high            |
| Bit 4: | ---   | Input condition X1 and X2          | ---   | Incorrect or defective actuator |
| Bit 5: | ---   | Guard door detected                | Internal device error   | Internal device error           |
| Bit 6: | ---   | Error warning <sup>1)</sup>        | Communication error between the field bus Gateway and the safety switchgear | ---                             |
| Bit 7: | Error reset   | Error (enabling path switched off) | Operating voltage too low   | ---                             |

<sup>1)</sup> after 30 min -> fault

## 7 Set-up and maintenance

The safety function of the safety components must be tested. In the case of correct installation and adequate use, the safety switchgear features maintenance-free functionality. A regular visual inspection and functional test, including the following steps, is recommended:

1. Check fixation of the safety switch and the actuator.
2. Check max. axial misalignment of actuator and safety switch.

3. Fitting and integrity of the cable connections.
4. Check the switch enclosure for damages
5. Remove particles of dust and soiling.



Adequate measures must be taken to ensure protection against tampering either to prevent tampering of the safety guard, for instance by means of replacement actuators.



Damaged or defective components must be replaced.

## 8 Disassembly and disposal

### 8.1 Disassembly

The safety switchgear must be disassembled in a de-energised condition only.

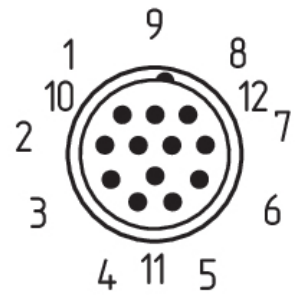
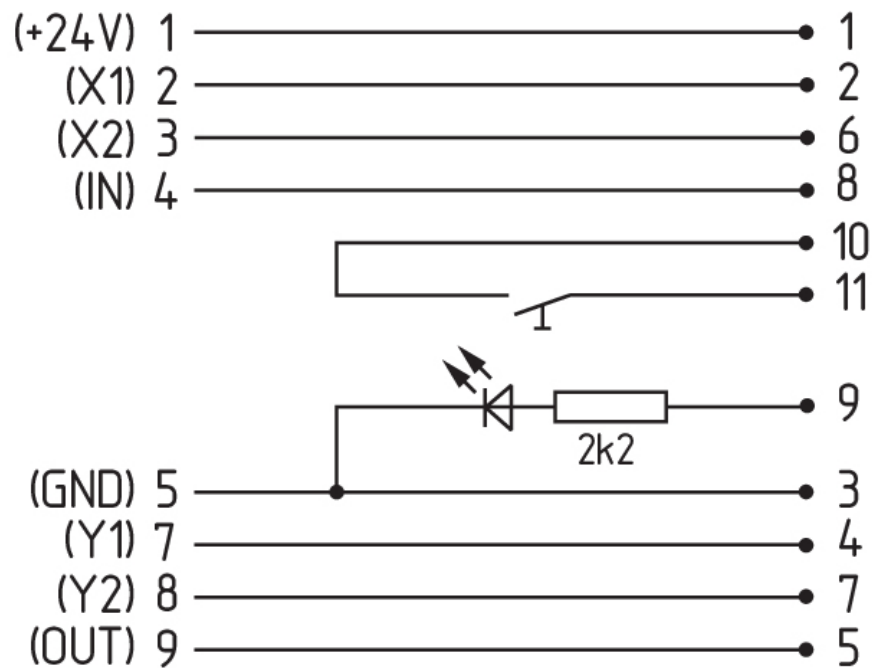
### 8.2 Disposal



The safety switchgear must be disposed of in an appropriate manner in accordance with the national prescriptions and legislations.

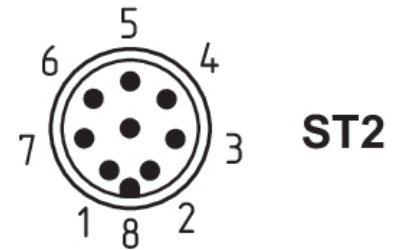
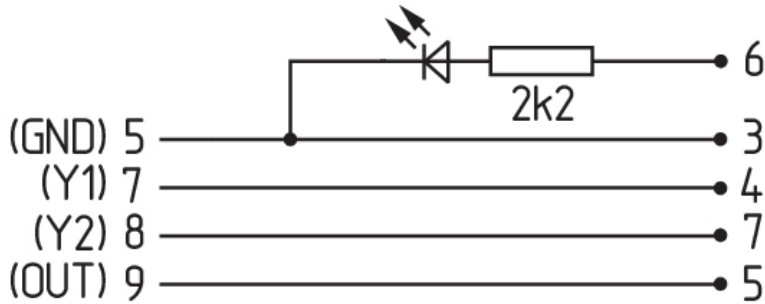
## 9 Appendix - Special versions

**Special version -2965-1**



| Connecting cables<br>with coupling (female) IP67, M23, 12 pole - 12 x 0.75 mm <sup>2</sup> |               |
|--|---------------|
| Cable length   | Ordering code |
| 5.0 m  | 101208520     |
| 10.0 m   | 103007354     |
| 20.0 m   | 101214418     |

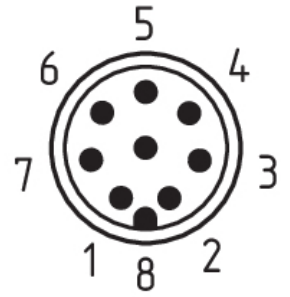
**Special version -2965-2**



| Connecting cables<br>with coupling (female) IP67, M23, 8+1 pole - 9 x 0.75 mm <sup>2</sup> |               |
|--|---------------|
| Cable length   | Ordering code |
| 5.0 m  | 101209959     |
| 10.0 m   | 101209958     |
| 15.0 m   | 103001384     |

| Connecting cables<br>with coupling (female) IP67, M12, 8 pole - 8 x 0.25 mm <sup>2</sup> |               |
|--|---------------|
| Cable length   | Ordering code |
| 2.5 m  | 103011415     |
| 5.0 m  | 103007358     |
| 10.0 m   | 103007359     |

**Special version -2965-3**



| Connecting cables<br>with coupling (female) IP67, M12, 8 pole - 8 x 0.25 mm <sup>2</sup> |               |
|--|---------------|
| Cable length   | Ordering code |
| 2.5 m  | 103011415     |
| 5.0 m  | 103007358     |
| 10.0 m   | 103007359     |