



EN Operating instructions. . . . . page 1  
Original

**General information**

Observe country-specific regulations for installation, safety, accident prevention and also rules governing proper disposal.

**Technical data**

Standards:	EN 60947-5-1
Design according to EN ISO 14119:	1
Enclosure:	light-alloy diecast, paint finish
Degree of protection:	IP65 to EN 60529
Protection class:	I
Degree of pollution:	3
Ambient temperature:	-30 °C ... +90 °C
Connection:	screw terminals
Cable section:	max. 2.5 mm <sup>2</sup> (incl. conductor ferrules)
Tightening torque:	
- Terminals:	1.5 Nm
- Fixing screws:	1.2 Nm
- Cover screws:	0.7 Nm
- Screws of the actuating head:	0.45 Nm
Utilisation category AC-15 I <sub>a</sub> /U <sub>e</sub> :	2.5 A / 230 VAC
Rated impulse withstand voltage U <sub>imp</sub> :	4 kV
Rated insulation voltage U <sub>i</sub> :	250 V
Thermal test current I <sub>the</sub> :	6 A
Max. fuse rating:	6 A gG D-fuse
Required short-circuit current:	1000 A
B <sub>10D</sub> NC contact to EN ISO 13849-1:	20,000,000

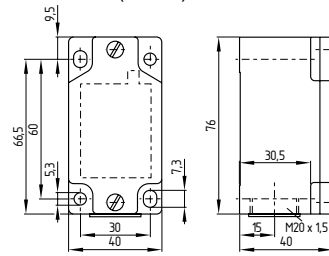
Provisions for a suitable conduit adapter to one of the applicable wiring systems in accordance with the National Electrical Code, ANSI/NFPA 70-2002 are available from the manufacturer. Refer to manufacturers information. Openings shall be closed by equipment rated for enclosure Types: 3, 3R, 3RX, 3S, 3SX, 3X, 5, 4, 4X, 6, 6P, 12 or 13. Tightening torque Field Wiring Terminals: 1.5 Nm

Further information along with the latest applicable declaration of conformity can be found in the Schmersal catalogues or in the online catalogue on the Internet: [products.schmersal.com](http://products.schmersal.com).

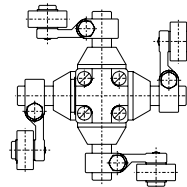
**Mounting and electrical connection**

To ensure a proper functioning, the switch must be installed so that the required switch travel is obtained. All components have sufficient after-travel to compensate for inaccuracies in the guidance of the actuating system. The switch should not be used as an end switch. Any mounting position.

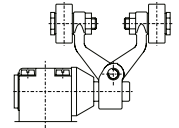
Dimensions (in mm)



Positioning actuator head



Positioning Roller Lever

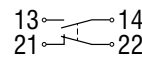


The electrical connection may only be carried out by authorised personnel in a de-energised condition.

Appropriate cable glands with a suitable degree of protection are to be used. The contact labelling can be found in the wiring compartment of the switch. After wiring, dust and soiling must be removed from the wiring compartment. An extremely strong tightening of the cover screws can reduce the sealing efficiency and therefore must be avoided.

**1 NO / 1 NC**

The contacts are shown in a non-actuated condition.



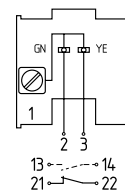
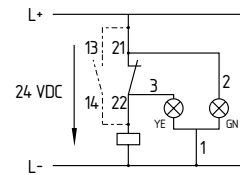
**Settle length x of the conductor: 6 mm**



**LED version**

Ordering suffix G24, protected against incorrect polarity and voltage spikes

- Operating voltage indication: green / GN
- Switching condition indication: yellow / YE



**K.A. Schmersal GmbH & Co. KG**

Mödinghofe 30, 42279 Wuppertal  
Germany  
Phone: +49 202 6474-0  
Telefax: +49 202 6474-100  
E-Mail: [info@schmersal.com](mailto:info@schmersal.com)  
Internet: [www.schmersal.com](http://www.schmersal.com)

