



EN Operating instructions. page 1
Original

General information



Observe country-specific regulations for installation, safety, accident prevention and also rules governing proper disposal.

Technical data

Standards:	IEC 60947-5-1, BG-GS-ET-15
Design according to ISO 14119:	1
Protection class:	IP65, IP67 to IEC 60529
Protection class 332, 335, 355 or 336:	I or II,
Degree of pollution:	3
Ambient temperature:	-30 °C ... +80 °C
Tightening torque:	
- Fixing screws 332, 335:	2 Nm
- Fixing screws 336:	1.2 Nm
- Cover screw 332, 335, 336:	1 Nm
- Head screws:	1.5 Nm
Cable section:	0.75 ... 2.5 mm ²
Utilisation category AC-15, DC-13 I _e /U _e :	
- Screw terminals 335, 336, 355:	4 A / 240 VAC, 4 A / 24 VDC
- Screw terminals 332:	2,5 A / 240 VAC
- M12 connector, 4-pole 336:	4 A / 240 VAC, 4 A / 24 VDC
- M12 connector, 4-pole 332, 335, 355:	4 A / 50 VAC, 4A / 24 VDC
Rated impulse withstand voltage U _{imp} :	
- Screw terminals 335, 336, 355:	6 kV
- Screw terminals 332, 335, 355 -03Z, -12Z:	4 kV
- M12 connector, 4-pole 336 or 332, 335, 355:	4 kV or 0.8 kV
Rated insulation voltage U _i :	
- Screw terminals:	250 V
- M12 connector, 4-pole 336, 332 or 335, 355:	250 V or 50 V
Thermal test current I _{the} :	
- Screw terminals 335, 336, 355:	10 A
- Screw terminals 332:	6 A
- M12 connector, 4-pole:	4 A
Max. fuse rating:	6 A gG D-fuse
Required short-circuit current:	1,000 A
B _{10D} NC contact to ISO 13849-1:	20,000,000



Further information along with the latest applicable declaration of conformity can be found in the Schmersal catalogues or in the online catalogue on the Internet: www.schmersal.net.

K.A. Schmersal GmbH & Co. KG
Mödinghofe 30, D - 42279 Wuppertal
Postfach 24 02 63, D - 42232 Wuppertal

Phone: +49 - (0)2 02 - 64 74 - 0
Telefax: +49 - (0)2 02 - 64 74 - 1 00
E-Mail: info@schmersal.com
Internet: <http://www.schmersal.com>

Contact variants



The electrical connection may only be carried out by authorised personnel in a de-energised condition.

For the cable entry, suitable cable glands with an appropriate degree of protection must be used.

Pin assignment of versions with M12 connector shown in brackets.

All NC contacts have positive break

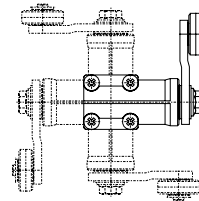
Z 332-11Y	-	-
Z/T 335-11Z	Z/T 335-02Z	T 335-20Z
Z/T 336-11Z	Z/T 336-02Z	T 336-20Z
Z/T 355-11Z	Z/T 355-02Z	T 355-20Z
T4VH 336-11YR-1058	T4VH 336-02YR-1058	T4VH 336-20YR-1058

T 335-12Z	T 335-03Z
T 355-12Z	T 355-03Z

Mounting

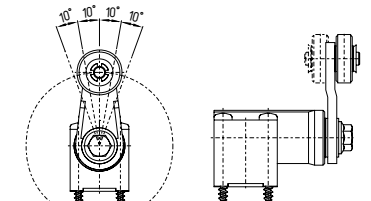
The enclosure must not be used as an end stop.
Any mounting position. (Dimensions in mm)

Actuation head
adjustable in increments of 90°

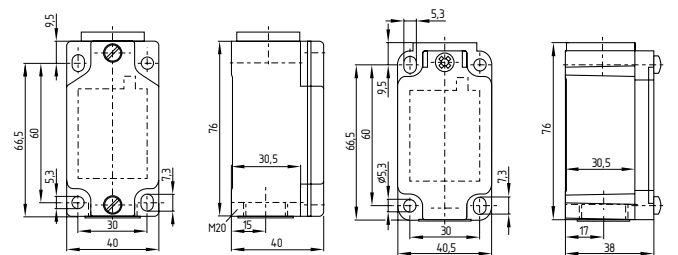


Z 332

Offset roller lever
adjustable in increments of 10°



Z/T 335



Z 332

Z/T 335

