



EN Operating instructions. page 1
Translation of the original operating instructions

Destination and use

The magnetic stop RM40S can be used as door stop with magnetic latching.

Warning about misuse



The component generates strong permanent magnetic fields and attraction forces. Caution: Danger of crushing. Keep away from devices and data media that are sensitive to magnetic fields. Especially to non-contact safety sensors and switching devices, depending on the working principle a minimum distance of 200 mm is recommended.

Mounting

The preferred installation position is on the closing edge of the safety door near to the door handle. It can be mounted anywhere. Fixing into position with two M4 screws.

The magnets are on the device floor and are laser printed. A system consists of a product type designation with N and S magnets clearly marked.

The effectiveness of the magnets is on all longitudinal sides, which allows the use of the system to be very flexible.

The magnets with boreholes when compared with the magnets with a rear screw thread -C have limitations to the usable area due to the screw heads from the housing cover.



When installing with shearing forces on the screws, a max. stop-weight of 5 kg is recommended.

K. A. Schmersal GmbH & Co. KG
Möddinghofe 30, D - 42279 Wuppertal
Postfach 24 02 63, D - 42232 Wuppertal

Phone: +49 - (0)2 02 - 64 74 - 0
Telefax: +49 - (0)2 02 - 64 74 - 1 00
E-Mail: info@schmersal.com
Internet: <http://www.schmersal.com>



Product description

Ordering code

This operating instructions manual applies to the following types:

RM40S-①

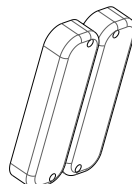
No.	Option	Description
①	C	Standard boreholes in both magnets Both magnets have hidden threads on the rear
	1C	1 Magnet with borehole, 1 Magnet with hidden thread on the rear

Technical data

Enclosure:	Stainless steel (V4A)
Weight:	2x 200 g
Latching force:	25 N / 35 N / 60 N
Latching surface:	side, angle, cover
Dimensions:	88 x 27 x 14.5 mm

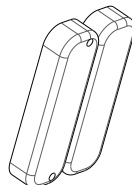
Latching force and surface

RM40S



Latching force: approx. 25 N
Latching surface: Side

RM40S-1C

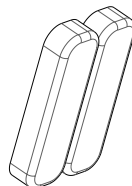


Latching force: approx. 25 N
Latching surface: Side

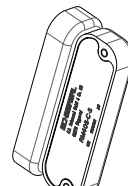


Latching force: approx. 35 N
Latching surface: Angle

RM40S-C



Latching force: approx. 25 N
Latching surface: Side



Latching force: approx. 35 N
Latching surface: Angle

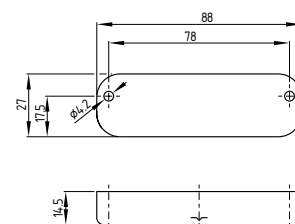


Latching force: approx. 65 N
Latching surface: Cover

Dimensions

All measurements in mm.

RM40S



RM40S-C

