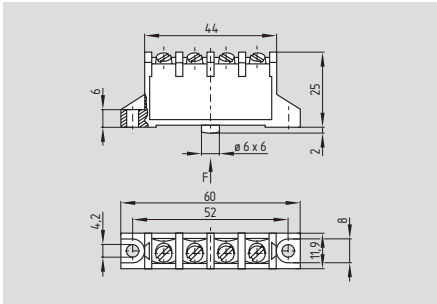


Micro switches

M/T 697

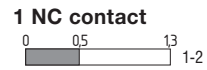


- Thermoplastic enclosure
- Flat design
- Very long life
- Snap action, change-over contact with double break
- Slow action, 1 NC with double break, positive break ⊖
- Temperature resistant up to + 120 °C
- Screw or spade terminals

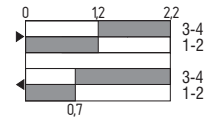
Technical data

Standards: IEC/EN 60947-5-1
 Enclosure: body: pressure-setting plastic
 cover: glass-fibre reinforced thermoplastic
 Actuator: thermoplastic
 Protection class: IP 40, terminals IP 00 to EN 60529
 Degree of pollution: 2
 Contact material: silver
 Contact type: M 697: change-over contact, double break, type Za
 T 697: 1 positive break NC contact, double break, type Y
 Switching system: M 697: snap action
 T 697: slow action, positive break NC contact ⊖
 Termination: screw or spade terminals
 Cable section: max. 2.5 mm² (incl. conductor ferrules)
 U_{imp}: 4 kV
 U_i: 250 V
 I_{the}: 6 A
 Utilisation category: AC-15
 I_e/U_e: 2.5 A / 230 VAC
 Max. fuse rating: 10 A gL/gG D-fuse
 Actuating force: approx. 4 N
 Ejection force: M 697: min. 1,3 N
 T 697: –
 Contact opening: 2 x 0.5 mm
 Switchover time: M 697: ≤ 10 ms (with actuating speed of 10 mm/min at plunger)
 T 697: –
 Bounce duration: M 697: ≤ 3 ms
 T 697: –
 Ambient temperature: – 30 °C ... + 120 °C
 Mechanical life: ≥ 30 million operations
 Switching frequency: 10000/h
 Actuating speed: M 697: min. 10 mm/min
 T 697: min. 60 mm/min
 Repeat accuracy of switching points: M 697: ± 0,05 mm at plunger
 T 697: ± 0,05 mm

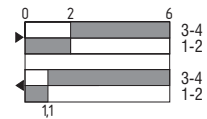
Contact variants



Change-over contact with double break Plunger



Offset roller lever 8 R



Approvals



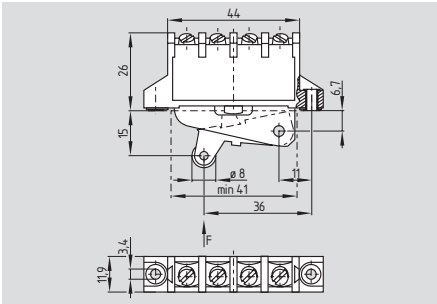
Ordering details

① 697-②-③-④

No.	Replace	Description
①	M	Snap action
	T	Slow action
②	11	Change-over contact with double break
	01	1 NC contact (only for T)
③	1	Screw terminals
	3	Spade terminals
④		Without terminal cover
	i	With terminal cover

Micro switches

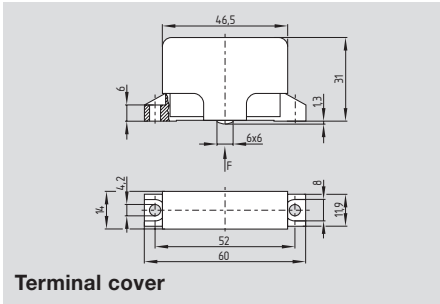
Offset roller lever 8 R



- Plastic roller
- Roller 6.4 mm wide

The roller lever cannot be dismantled.
On versions with slow action contacts, a minimum play of 0.5 mm is provided between the plunger and operating lever to allow for possible contact wear.

System components



Terminal cover

Approvals



Ordering details

① 697-②-③-8 R-④

No.	Replace	Description
①	M	Snap action
	T	Slow action
②	11	Change-over contact with double break
	01	1 NC contact (only for T)
③	1	Screw terminals
	3	Spade terminals
④		Without terminal cover
	i	With terminal cover

Ordering details

Terminal cover **ordering suffix -i**

- Prevents contact with live parts
- Hand and finger guard to VDE 0106-100
- Clips into position