



EN Operating instructions. page 1
Original

Purpose

The actuators are preferably used on safety guards in conjunction with the AZM150 solenoid interlocks.

There are different actuator types available.
Preferably for sliding and removable guards:
AZM150-B1 Straight actuator
AZM150-B5 Angled actuator
For hinged safety guards:
AZM150-B6 Flexible actuator

Mounting instructions

Observe the notes in the operating instructions of the AZM150 solenoid interlock.

When the switch is fitted on a hinged safety guard, please ensure that the point of rotation is located within the range of the upper surface of the safety switch, in which the actuator hook is inserted (refer to table).

The insertion funnel on the head of the interlock allows insertion of a flexible actuator with an axial offset of $\leq \pm 1$ and a height offset of $\leq \pm 1$.



The actuator must be permanently fitted to the safety guards and protected against displacement by suitable measures (tamperproof screws, gluing, drilling of the screw heads).



Please observe that, when fixing the switch e.g. by means of rivetting or welding, the insertion depth of the actuator is not modified.

Actuating radii				
	R _{min} [mm]	d [mm]	R _{min} [mm]	d [mm]

	AZM150-B6	250	18.5	250	23
	AZM150-B1	-	-	-	-
	AZM150-B5	-	-	-	-

Key

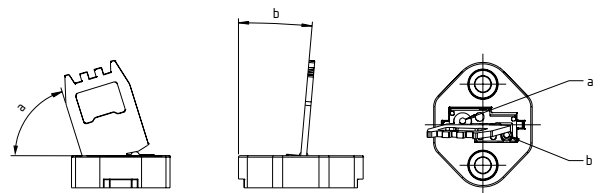
Actuator radii, when the actuator is pivoted in from the front

Actuator radii, when the actuator is pivoted in from above

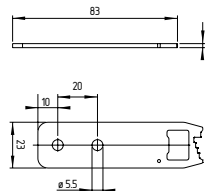
The axis of the hinge must be d mm above and in a parallel plane to the top surface of the safety switch. The basis setting provides a minimum radius of R_{min}.

Setting screw

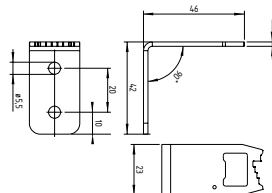
The AZM 150-B6 actuator is set to the smallest radius in factory. To increase the radius, the setting screws a + b must be turned by means of a hexagonal key A/F 2 mm.



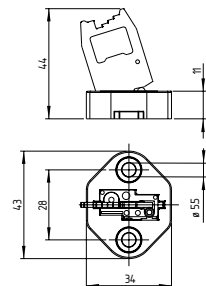
Actuator B1



Actuator B5



Actuator B6



Installation position with actuator inserted see operating instructions AZM150.

Accessories

	Designation	Ordering code
Tamperproof screws	ACC-NRS-M5x15-FHS-2PCS	103033698



Strength of the actuator screws 5.6.

K.A. Schmersal GmbH & Co. KG
Möddinghofe 30, 42279 Wuppertal
Germany

Phone: +49 202 6474-0
Telefax: +49 202 6474-100
E-Mail: info@schmersal.com
Internet: www.schmersal.com

Production site:
SCHMERSAL
Industrial Switchgear (Shanghai) Co., Ltd.
Cao Ying Road 3336
201712 Shanghai / Qingpu, P.R.CHINA

Phone: +86 21 63758287
Fax: +86 21 69214398
E-Mail: info@schmersal.com.cn
Internet: www.schmersal.com.cn

施迈赛工业开关制造（上海）有限公司
地址：上海市青浦区漕盈路3336号
邮编：201712

电话：021 63758287
传真：021 69214398

网址： www.schmersal.com.cn