



General information



Observe country-specific regulations for installation, safety, accident prevention and also rules governing proper disposal.

Technical data

Standards:	EN 60947-5-1
Design according to EN ISO 14119:	1
Protection class:	IP65, IP67 to EN 60529
Protection class 235, 255 or 236, 256:	I or II, <input type="checkbox"/>
Degree of pollution:	3
Ambient temperature:	-30 °C ... +80 °C
Tightening force:	
- Fixing screws 236, 256:	1.2 Nm
- Fixing screws 235, 255:	2 Nm
- Cover screw 235, 255:	0.7 Nm
- Screws of the actuating head:	0.45 Nm
Cable section:	0.75 ... 2.5 mm <sup>2</sup>
Utilisation category AC-15, DC-13 I <sub>g</sub> /U <sub>e</sub> :	
- Screw terminals:	4 A / 240 VAC, 1 A / 24 VDC
- M12 connector, 4-pole 236, 256:	4 A / 240 VAC, 1 A / 24 VDC
- M12 connector, 4-pole 235, 255:	4 A / 50 VAC, 1 A / 24 VDC
Rated impulse withstand voltage U <sub>imp</sub> :	
- Screw terminals:	6 kV
- M12 connector, 4-pole 236, 256 or 235, 255:	4 kV or 0.8 kV
Rated insulation voltage U <sub>i</sub> :	
- Screw terminals:	250 V
- M12 connector, 4-pole 236, 256 or 235, 255:	250 V or 50 V
Thermal test current I <sub>the</sub> :	
- Screw terminals:	10 A
- M12 connector, 4-pole:	4 A
Max. fuse rating:	6 A gG D-fuse
Required short-circuit current:	1,000 A
B <sub>10D</sub> NC contact to EN ISO 13849-1:	20,000,000



For NPT threads, conduit hub is to be connected to conduit before hub is connected to enclosure.  
For 256 Models: Not for use with rigid conduit.



Further information along with the latest applicable declaration of conformity can be found in the Schmersal catalogues or in the online catalogue on the Internet: [products.schmersal.com](http://products.schmersal.com).

Contact variants

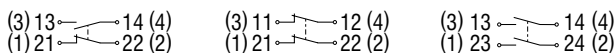


The electrical connection may only be carried out by authorised personnel in a de-energised condition.

For the cable entry, suitable cable glands with an appropriate degree of protection must be used.

Pin assignment of versions with M12 connector shown in brackets.

All NC contacts have positive break  $\ominus$ .



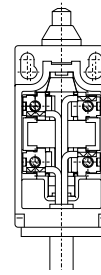
Z/T 235-11Z	Z/T 235-02Z	T 235-20Z
Z/T 236-11Z	Z/T 236-02Z	T 236-20Z
Z/T 255-11Z	Z/T 255-02Z	T 255-20Z
Z/T 256-11Z	Z/T 256-02Z	T 256-20Z

Settle length x of the conductor: 6 mm

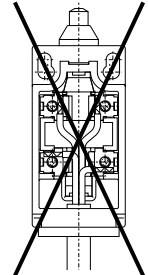


Cable connection

Right



Wrong

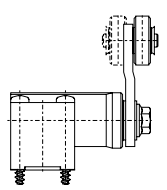
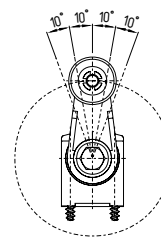
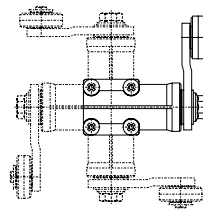


Mounting

The enclosure must not be used as an end stop.  
Any mounting position. (Dimensions in mm)

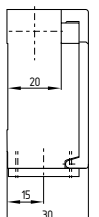
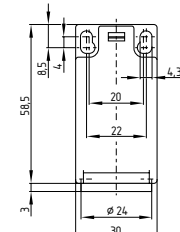
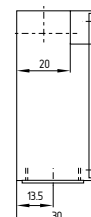
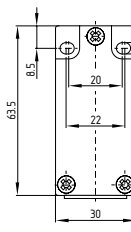
Offset roller lever adjustable in increments of 10°

Actuation head adjustable in increments of 90°



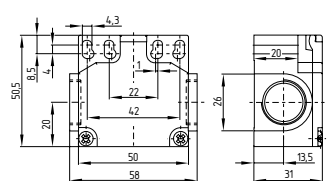
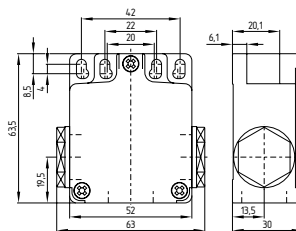
Z/T 235

Z/T 236



Z/T 255

Z/T 256



**K.A. Schmersal GmbH & Co. KG**  
Mödinghofe 30, 42279 Wuppertal  
Germany  
Phone: +49 202 6474-0  
Telefax: +49 202 6474-100  
E-Mail: [info@schmersal.com](mailto:info@schmersal.com)  
Internet: [www.schmersal.com](http://www.schmersal.com)

**Production site:**  
**Schmersal India Private Limited**  
G-7/1, MIDC, Ranjangaon  
Tal. Shirur, Dist. Pune – 412 220  
Maharashtra  
India  
Internet: [www.schmersal.in](http://www.schmersal.in)

