



General information



Observe country-specific regulations for installation, safety, accident prevention and also rules governing proper disposal.

Technical data

Standards:	EN 60947-5-1
Design according to EN ISO 14119:	1
Degree of protection:	IP65, IP67 to EN 60529
Protection class 332, 335, 355 or 336:	I or II, <input type="checkbox"/>
Degree of pollution:	3
Ambient temperature:	-30 °C ... +80 °C
Tightening torque:	
- Fixing screws 332, 335:	2 Nm
- Fixing screws 336:	1.2 Nm
- Cover screw 332, 335, 336:	1 Nm
- Head screws:	1.5 Nm
Cable section:	0.75 ... 2.5 mm <sup>2</sup>
Utilisation category AC-15, DC-13 I <sub>e</sub> /U <sub>e</sub> :	
- Screw terminals 335, 336, 355:	4 A / 240 VAC, 4 A / 24 VDC
- Screw terminals 332:	2,5 A / 240 VAC
- M12 connector, 4-pole 336:	4 A / 240 VAC, 4 A / 24 VDC
- M12 connector, 4-pole 332, 335, 355:	4 A / 50 VAC, 4A / 24 VDC
Rated impulse withstand voltage U <sub>imp</sub> :	
- Screw terminals 335, 336, 355:	6 kV
- Screw terminals 332, 335, 355 -03Z, -12Z:	4 kV
- M12 connector, 4-pole 336 or 332, 335, 355:	4 kV or 0.8 kV
Rated insulation voltage U <sub>i</sub> :	
- Screw terminals:	250 V
- M12 connector, 4-pole 336, 332 or 335, 355:	250 V or 50 V
Thermal test current I <sub>th</sub> :	
- Screw terminals 335, 336, 355:	10 A
- Screw terminals 332:	6 A
- M12 connector, 4-pole:	4 A
Max. fuse rating:	6 A gG D-fuse
Required short-circuit current:	1,000 A
B <sub>10D</sub> NC contact to EN ISO 13849-1:	20,000,000



Further information along with the latest applicable declaration of conformity can be found in the Schmersal catalogues or in the online catalogue on the Internet: [products.schmersal.com](http://products.schmersal.com).

Electrical connection

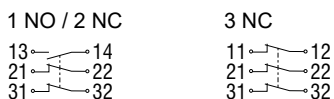


The electrical connection may only be carried out by authorised personnel in a de-energised condition.

For the cable entry, suitable cable glands with an appropriate degree of protection must be used.

Pin assignment of versions with M12 connector shown in brackets.

All NC contacts have positive break ⊖.

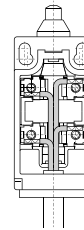


Settle length x of the conductor: 6 mm

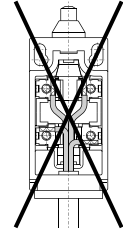


Cable connection

Right



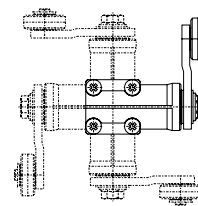
Wrong



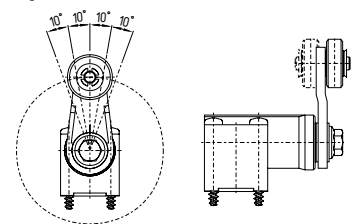
Mounting

The enclosure must not be used as an end stop. Any mounting position. (Dimensions in mm)

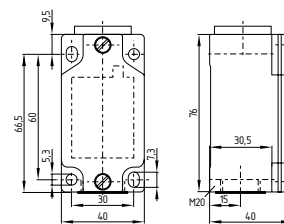
Actuation head adjustable in increments of 90°



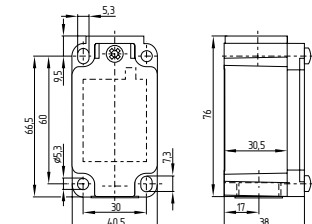
Offset roller lever adjustable in increments of 10°



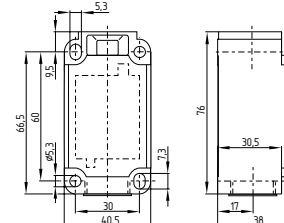
Z 332



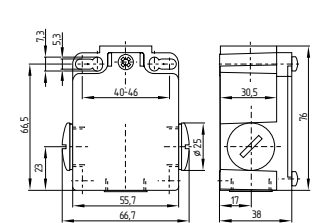
Z/T 335



Z/T 336

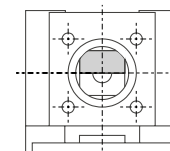


Z/T 355

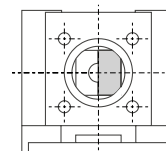


Changing the switching function

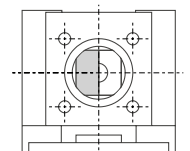
switching in both directions



switching only clockwise



switching only counterclockwise



**K.A. Schmersal GmbH & Co. KG**  
Mödinghofe 30, 42279 Wuppertal  
Germany  
Phone: +49 202 6474-0  
Fax: +49 202 6474-100  
E-Mail: [info@schmersal.com](mailto:info@schmersal.com)  
Internet: [www.schmersal.com](http://www.schmersal.com)

**Production site:**  
**Schmersal India Private Limited**  
G-7/1, MIDC, Ranjangaon  
Tal. Shirur  
Dist. Pune – 412 220  
Maharashtra  
India  
Internet: [www.schmersal.in](http://www.schmersal.in)