



EN Operating Instructions page 1
Original

About this document

These operating instructions serve as a supplement to the operating instructions for PS215/PS216/PS226 and PS315/PS316. Deviating or additional instructions follow.

Product description

Position switches with ordering suffix -G have an integrated LED status display.

LED	System condition
green	Power supply on
yellow	NC / NO contact is closed

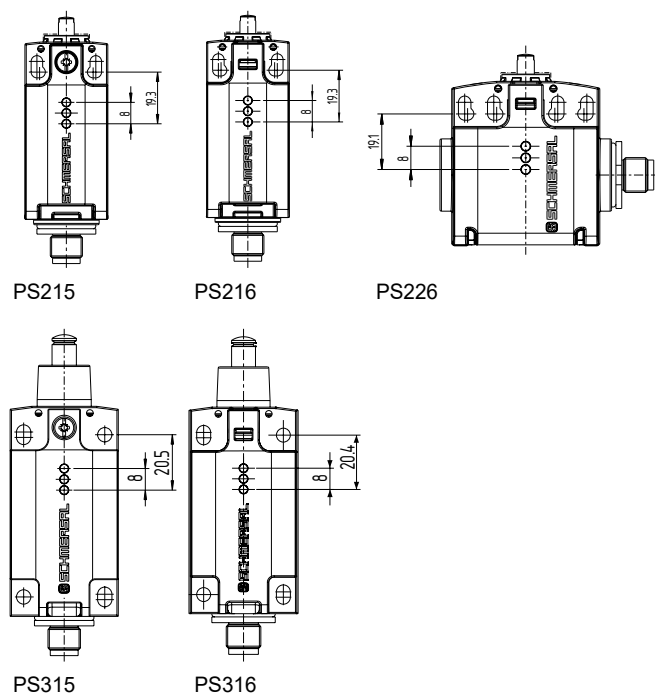
Position switches with LED are for use in combination with the safety field box SFB made by Schmersal.

Technical data

Utilisation category DC-13 I_e/U_e: 2 A / 24 VDC

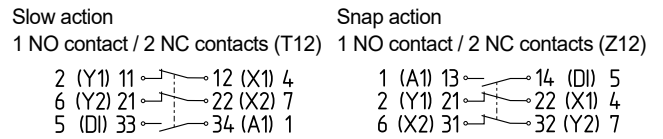
The power-source has to be an isolated Limited voltage/Limited Current protected by maximum 2A and maximum 30Vdc, 42.4Vdc peak. Protected by an UL248 series fuse.

Dimensions (All measurements in mm.)

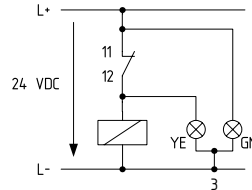


Contact Options

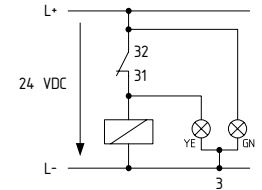
All NC contacts positive break \ominus . Yellow LED lights up if the contact is closed. Pin and function assignment when using the position switches in conjunction with the SFB safety fieldbox made by Schmersal marked in brackets.



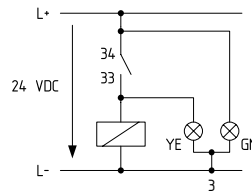
In as-delivered state:
LED at NC contact 11/12



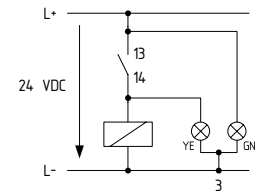
In as-delivered state:
LED at NC contact 31/32



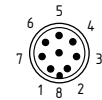
Circuit board rotated 180°:
LED at NO contact 33/34



Circuit board rotated 180°:
LED at NO contact 13/14



M12 connector, 8-pole,
Pin 3 = GND



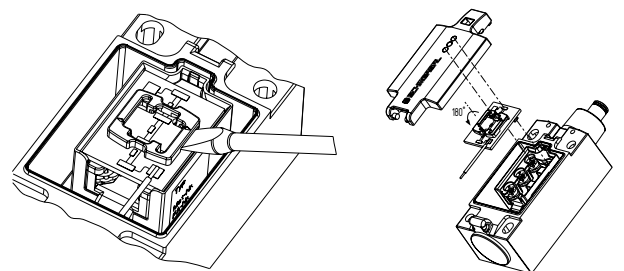
Protected against incorrect polarity and voltage spikes.

Electrical connection

In the as-delivered condition, the LEDs are at the NC contacts. Rotating the circuit board 180° allows the LEDs to be switched at the NO contacts.

Procedure for rotating the circuit board 180°:

1. Open the device cover.
2. Remove the circuit board using a screwdriver.
3. Rotate circuit board 180°.
4. Reinsert the circuit board into the switch insert.
5. Refit the device cover.



K.A. Schmersal GmbH & Co. KG
Mödinghofe 30, 42279 Wuppertal
Germany
Phone: +49 202 6474-0
Fax: +49 202 6474-100
E-Mail: info@schmersal.com
Internet: www.schmersal.com

