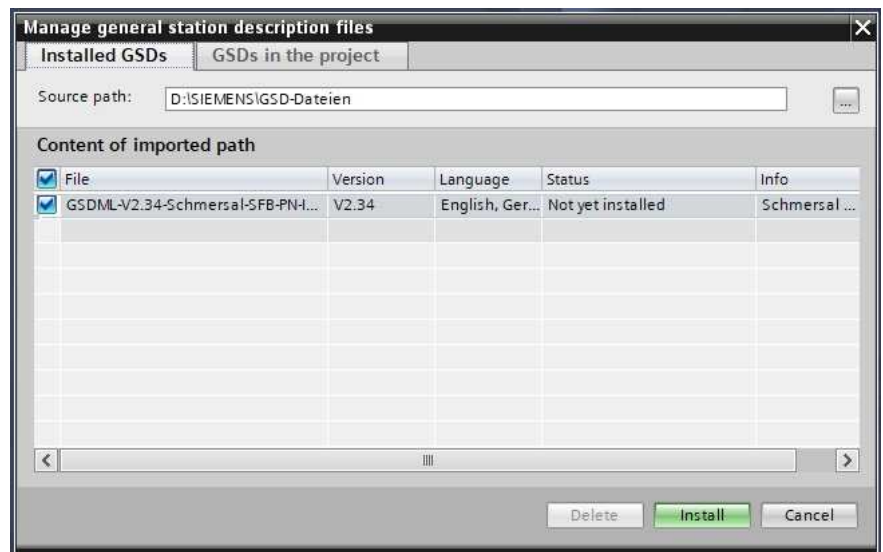
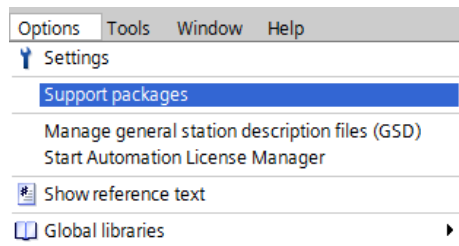
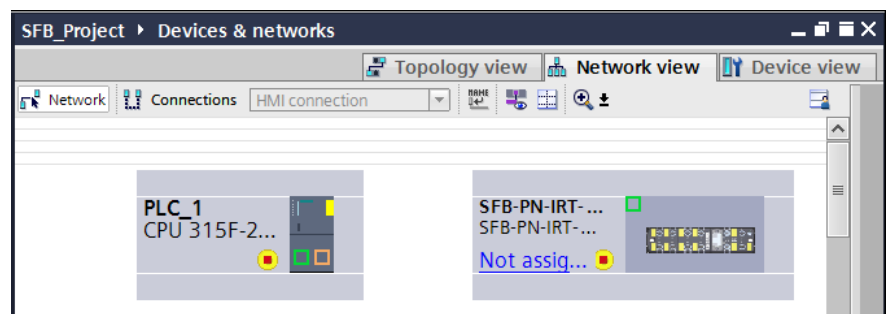
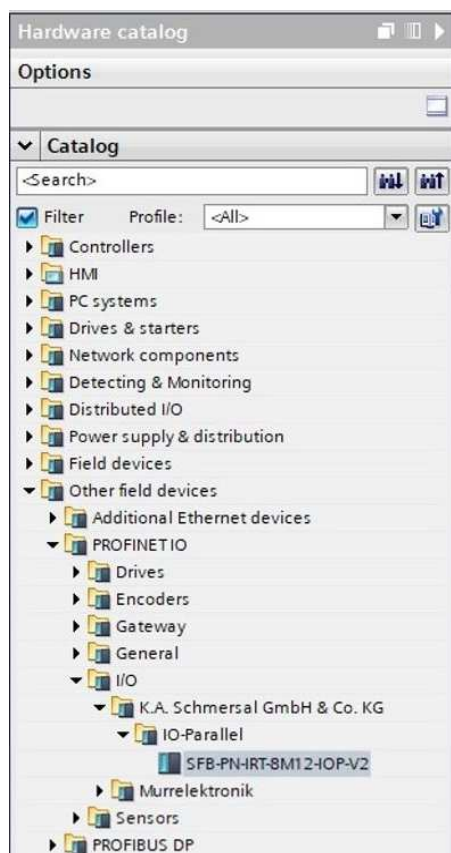


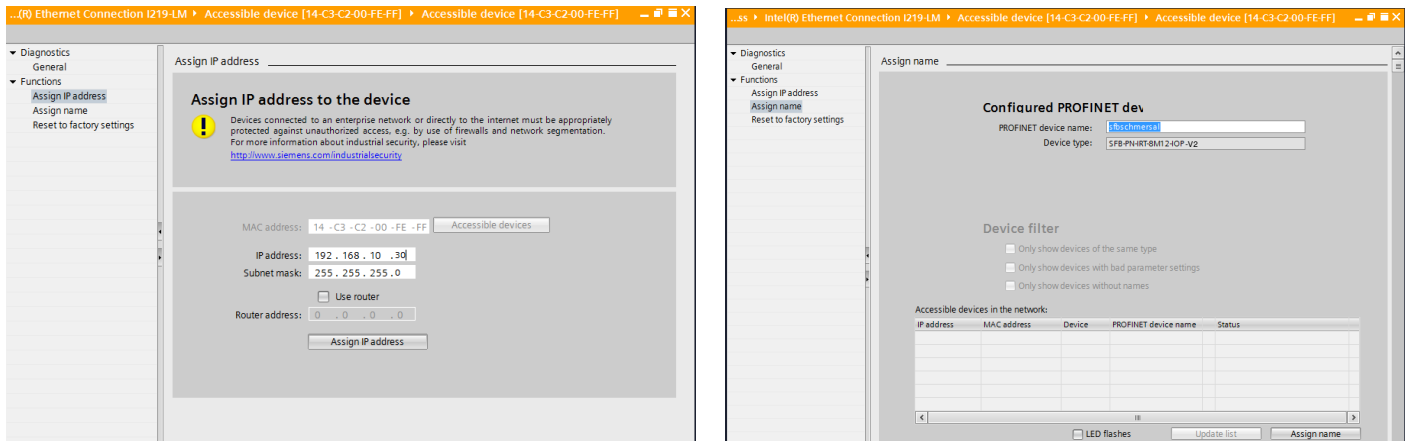
Step 1: Install the GSDML file of the SFB-PN in the configuration software (TIA / STEP 7)



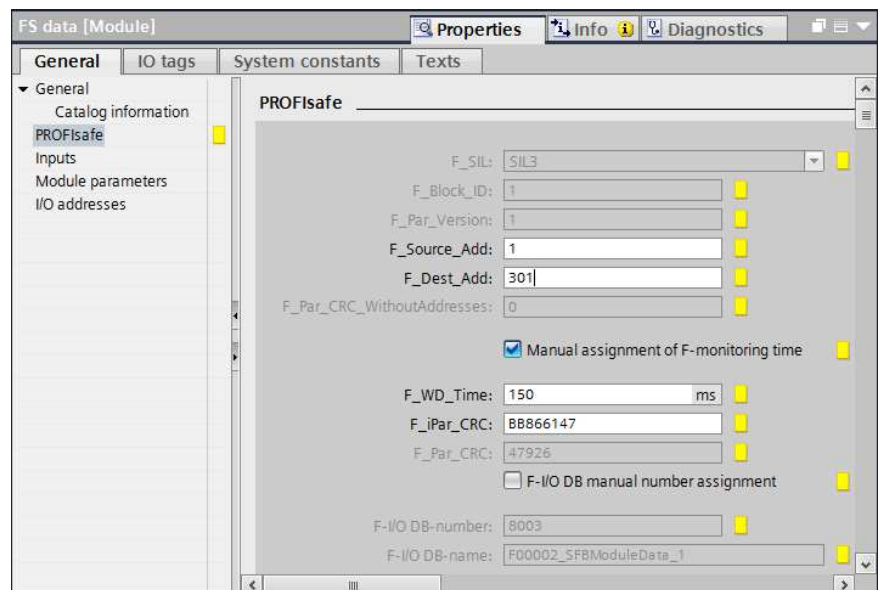
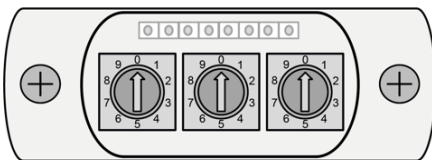
Step 2: Add the SFB-PN module to the hardware configuration




Step 3: Configuring SFB-PN in the PROFINET network (IP address & PROFINET name)



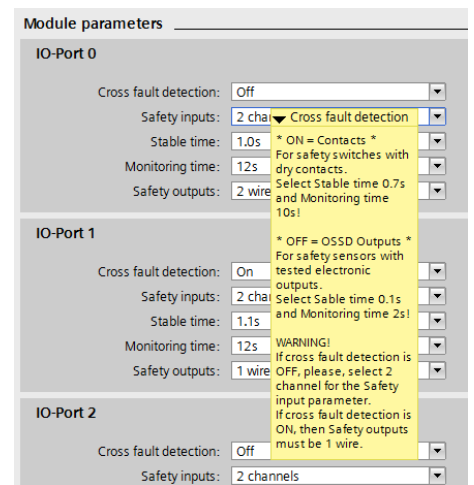
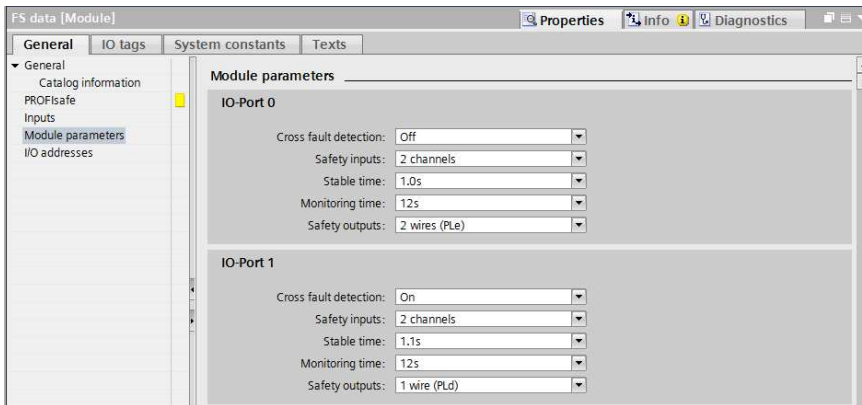
Step 4: Set the F address (PROFIsafe address) on the field box by using the rotary coding switches and configure it in the configuration software.



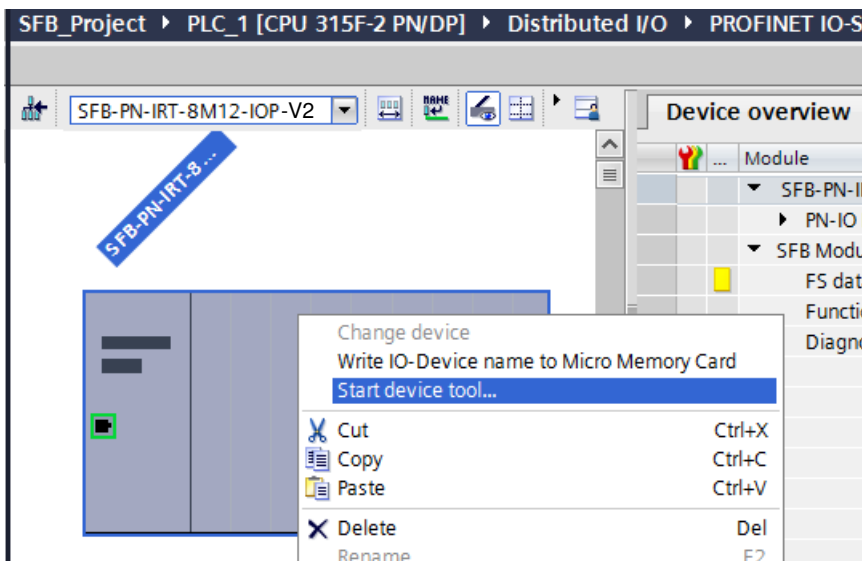
Step 5: Set F_WD_Time depending on the call cycle of the safety program of the F-PLC

	HINWEIS
<p>The module only starts correctly if the call cycle of the safety program of the F-PLC is selected to be significantly shorter than the F_WD_Time. (e.g. call cycle 20 ms and F_WD_Time > 80 ms)</p>	

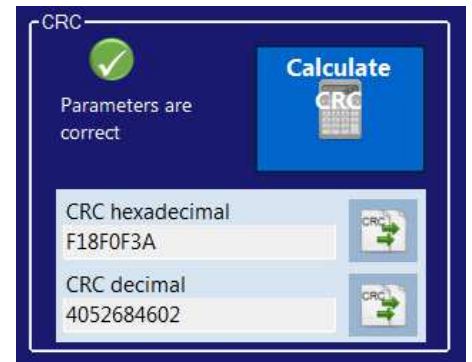
Step 6: Configuring safety parameters for the 8 device ports in the F-CPU (S7 controller)



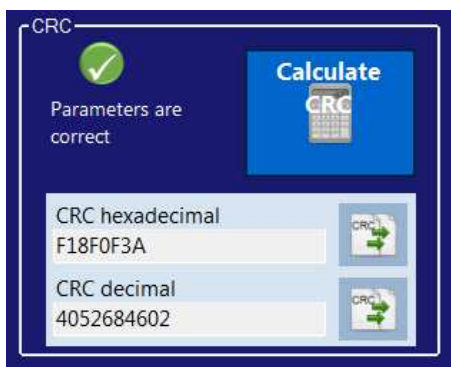
Step 7: Call the **SFB Configuration Tool** via the TCI interface of the configuration software




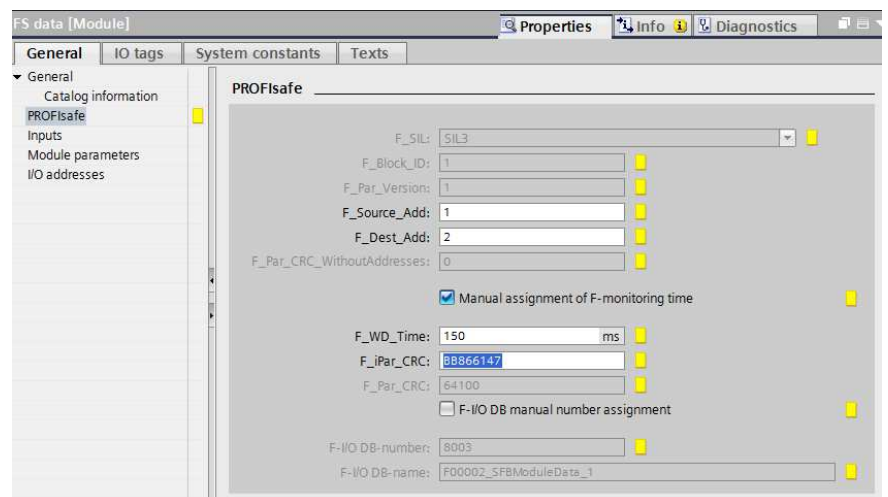
Step 8: Check the configured safety parameters with the **SFB Configuration Tool** and calculate the F_iPar_CRC



Step 9: Copy the F_iPar_CRC to the S7 controller



Copy to clipboard with .
Insert under **Properties** / PROFIsafe.



Step 10: Implementing a program for the acknowledgement of module faults and device port faults

Step 11: Download configuration from the configuration software to the F-PLC