

System solutions for every lift.
Everywhere.

bpTARGET DESTINATION CALL SYSTEM

NEW

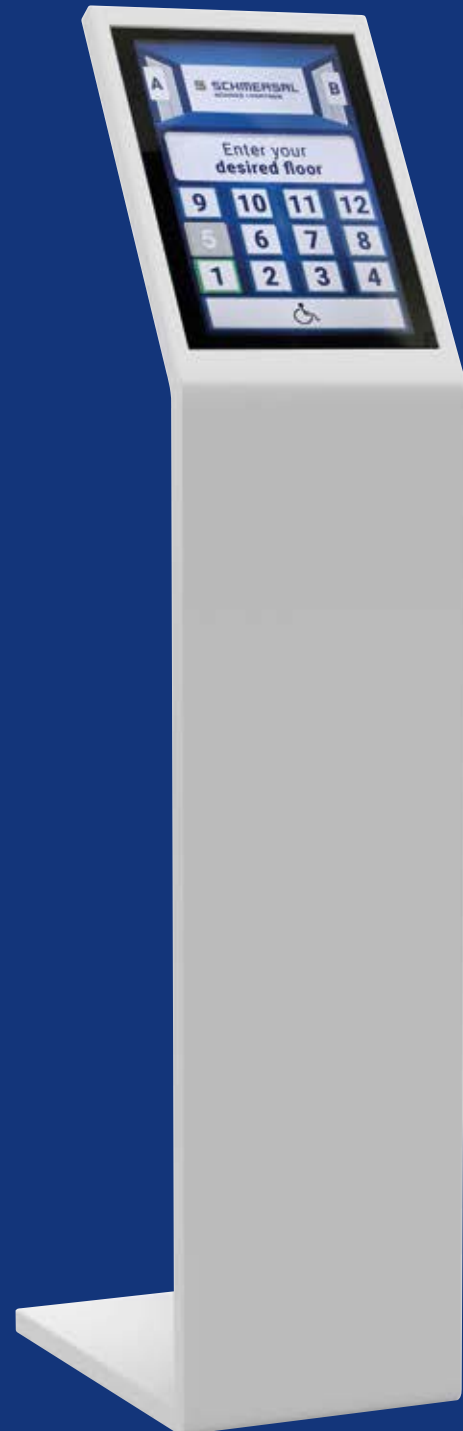


SCHMERSAL
BÖHNKE+PARTNER

bpTARGET

DESTINATION CALL SYSTEM

- Lift group control to increase passenger flow efficiency
- User friendly operation elements with touch screen for intuitive use
- Increase in transport capacity and performance
- Reduction of waiting and travel time
- Allocation of passengers to individual lifts
- Increase in user and ride comfort
- Reduction of energy consumption
- Less wear on the doors by reducing the number of stops
- Designed to work perfectly with our bp408 lift controller
- Integrated in bp408 without separate controller: Only corresponding CANopen display needed



bpTARGET DESTINATION CALL SYSTEM

In commercial buildings with constant traffic flow and countless lift rides per hour, our destination call system bpTARGET is essential for increasing efficiency, reducing waiting times and improving the overall user experience.

Unlike traditional lifts where users select their desired floor within the cabin, destination call systems allow passengers to enter their destination before entering the lift. This advanced feature allows the system to group passengers travelling to the same or a nearby floor, optimising the lift's route and minimising the number of stops.

This results in faster travel times, reduced queues at peak times and greater energy efficiency by avoiding unnecessary lift stops. For businesses, this means smoother traffic flow, improved customer satisfaction and better time management, which is essential for maintaining both productivity and a positive environment in busy commercial buildings.

With an increasingly conscious and demanding market, where solutions against climate change is requested, the bpTARGET optimises travel efficiency by significantly reducing the number of stops and overall energy consumption.

This streamlined approach not only minimises waiting times but also reduces power consumption, contributing to energy savings and the fight against climate change. By improving operational efficiency, the system supports sustainability goals and meets the market's eco-friendly expectations.



The bpTARGET is designed to improve traffic flow management in commercial buildings, hospitals, hotels, shopping malls, cruise ships and office buildings.



Display at building floor mounted in a column

HOW IT WORKS

bpTARGET is an intelligent and efficient lift destination call system where the passenger selects the target floor in the lobby of the building instead of pressing the “up and down” button and selecting the desired floor in the car.

The system groups passengers by destination in the same lift, reducing the number of stops and optimising the lift travel – integrate bpTARGET to improve the transport experience in your building.

IMPROVING TRAFFIC EFFICIENCY

- No more delayed lift travels by intermediate stops
- No more overcrowded lifts
- No more waiting lines
- No more struggling to press the floor button in a crowded lift car

bpTARGET

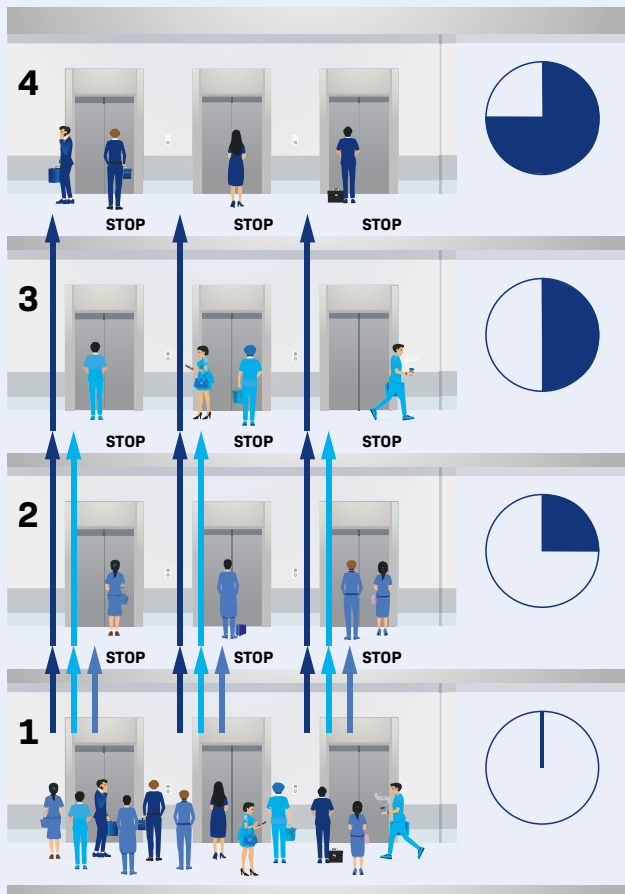
EFFICIENCY IN TRAFFIC FLOW

Comparison of collective call control and destination call control at passenger peak.

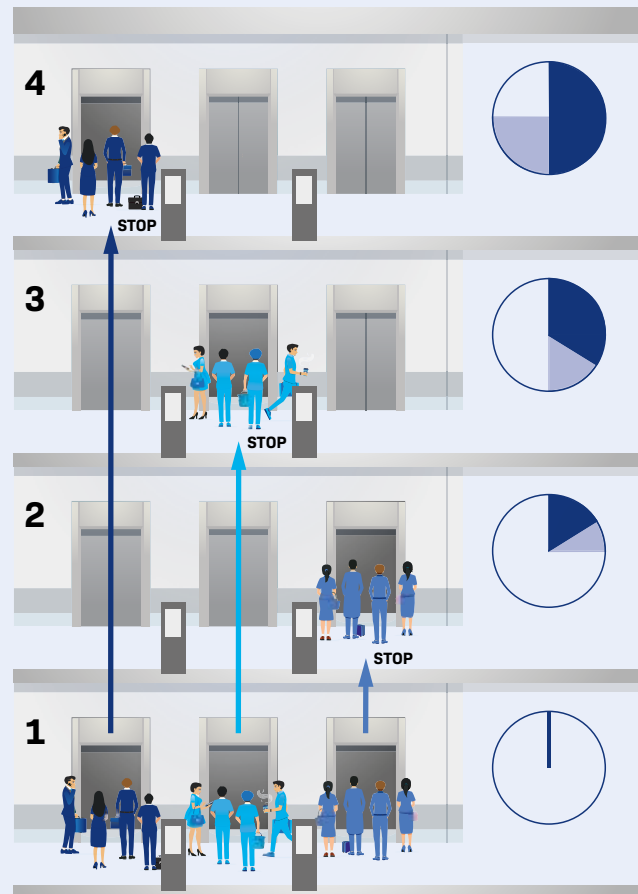
A simplified situation with the following criteria is assumed:

- Busy office building with three car lift groups
- 12 passengers entering the building one after the other
- Passenger peak: all passengers travelling from the ground floor to the destination floor
- No traffic between floors

Schematic diagram of three car lift group with collective control



Schematic diagram of three car lift group with destination call control



Operation with bpTARGET destination call system:

- Reduction of stops and travelling time:
In above example:
Collective Control = 9 stops vs. **bpTARGET = 3 stops**
- Integrated in bp408, no separate controller required
- Only corresponding CANopen display needed

bpTARGET TOUCH SCREEN

Our Touch Screen is designed to be mounted on the wall or in a column. The two different sizes allow to have a larger screen for the lift cabin and a smaller screen to be placed at the lift entrance on each floor.

The display layout can be personalised to suit the customer and building requirements.



Input terminal at each stop (7" or 10.5" touch screen)



■ Touch Screen 7"



■ Touch Screen 10.1"

Key Features

	<ul style="list-style-type: none"> • Display designed to be placed at every door 	<ul style="list-style-type: none"> • Display designed to be placed at the lift cabin
--	---	---

Technical data

Resolution	1024 × 600 px	1280 × 800 px
Active area	154 × 85 mm	217 × 136 mm
Housing dimension (H × W × D)	202 × 138 × 30 mm	272 × 190 × 30 mm
Weight	0.5 kg	1 kg
Electrical data		
Supply voltage	24 VDC	24 VDC
Starting current (max.)	1.5 A	1.5 A
Energy requirements	8 W	10 W
Ambient conditions		
Ambient temperature	-20 °C ... +50 °C	-20 °C ... +50 °C

bpTARGET

bp408 – CONTROL SYSTEM

- Compact design
- Software includes wide range of functions
- Door frame installation applicable to all installation areas
- Built-in safety module in accordance with EN 81-20/50
- 16 programmable inputs/outputs: 8 inputs / 8 outputs
- COM interfaces: CANopen Lift, USB, Ethernet, RS 485 (DCP) and RS 232
- Can be used for both traction and hydraulic systems
- Highly developed group algorithm adaptable to customer requirements without higher-level computer
- Supports all types of landing and cabin doors
- Supports absolute copying systems (linear and rotary encoders)
- Supports safe position units (PSU)



SYSTEM SOLUTIONS FOR EVERY LIFT. EVERYWHERE.

Our customers lift systems are at the focus of our attention. Regardless if it's a new system or a modernisation – with our years of experience we identify an individual or standardised solution according to your requirements. Our common goal is to guarantee the safe movement of the lift system for the users.

Schmersal Böhnke + Partner is a member of the Schmersal Group. With its products, the ownermanaged Schmersal Group has dedicated itself to the safety of people and machines for many decades. The company was founded in 1945, and is represented by seven manufacturing sites on three continents and with its own companies and sales partners in more than 60 nations. In the demanding field of machine safety, the Schmersal Group is one of the international market and competence leaders. Based on a comprehensive product portfolio, the company's approximately 2000 employees develop and plan complete safety-related system solutions.

For over 50 years we have supplied high-quality components for the lift industry. With the acquisition of Böhnke + Partner to the Schmersal Group, we took over the system concept to our lift area. Since then, the product portfolio – with control systems and components – includes all necessary elements for equipping a lift system from electrical point of view.

We supply lift manufacturers with our products all over the world. The Schmersal Group has four production plants in Germany and one each in Brazil, China and India. We offer the flexibility of a medium-sized company, combined with the international presence of a company group.



CONTROL MODULES



COMPONENTS FOR LIFT CONSTRUCTION



CONTROL SYSTEM ASSEMBLY



x.000 / L+W / 08.2024 / Teile-Nr. 103056876 / EN / Ausgabe 01